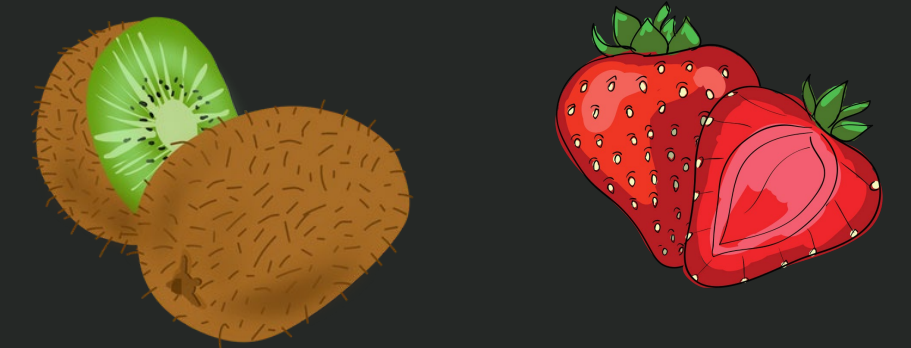
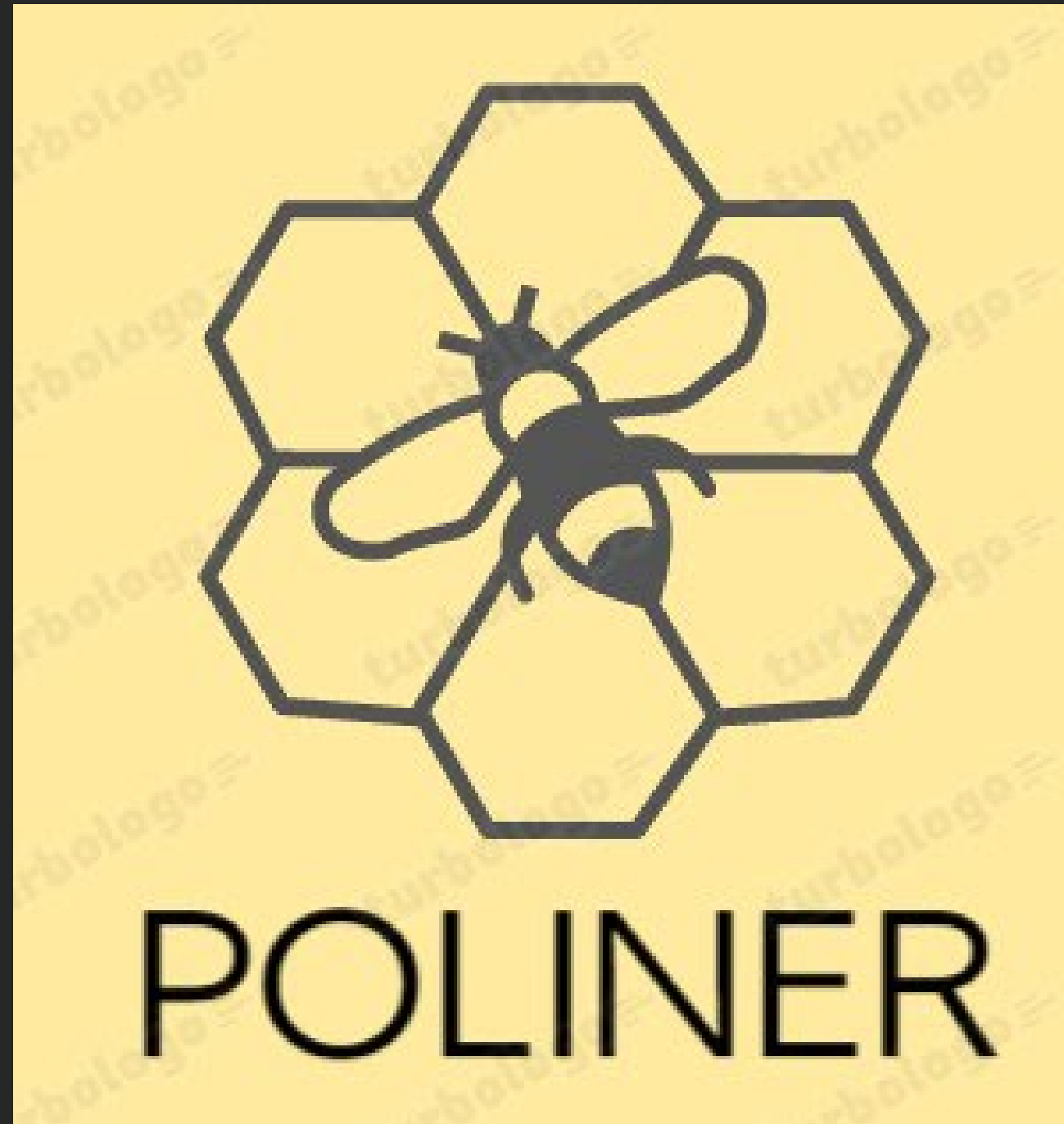
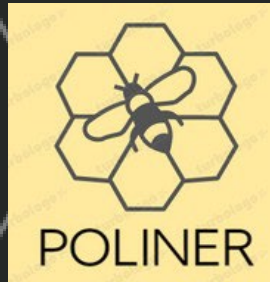


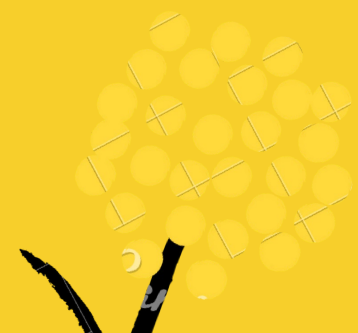
En un país multicolor



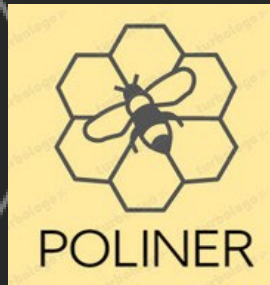
Carlos Carou Suárez
Xoaquín Mene Beiró
Marcos Pérez Parrad
Adrián Fernández Dosouto



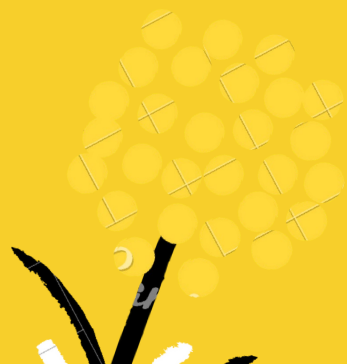
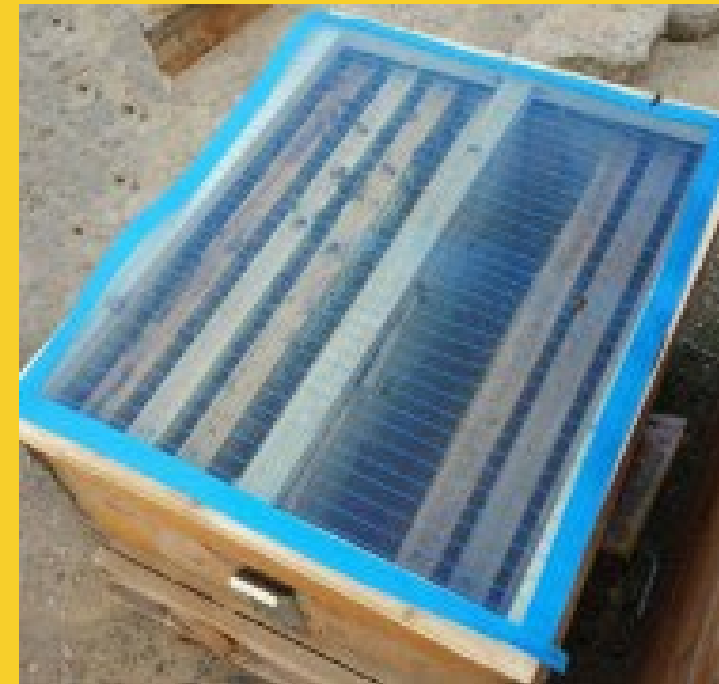
Abejorro común (*Bombus terrestris* L.)







¿Qué hacemos ?



01

Ambiente de otoño para fecundación



02

Hibernar



03

Futura colmena



04

Controles de calidad



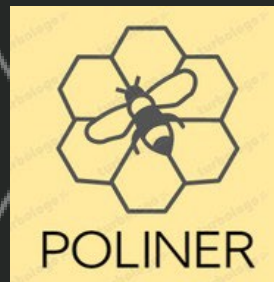


¿ **Cómo**
obtenemos
las reinas ?

Obreras
sobrealimentan la
cría

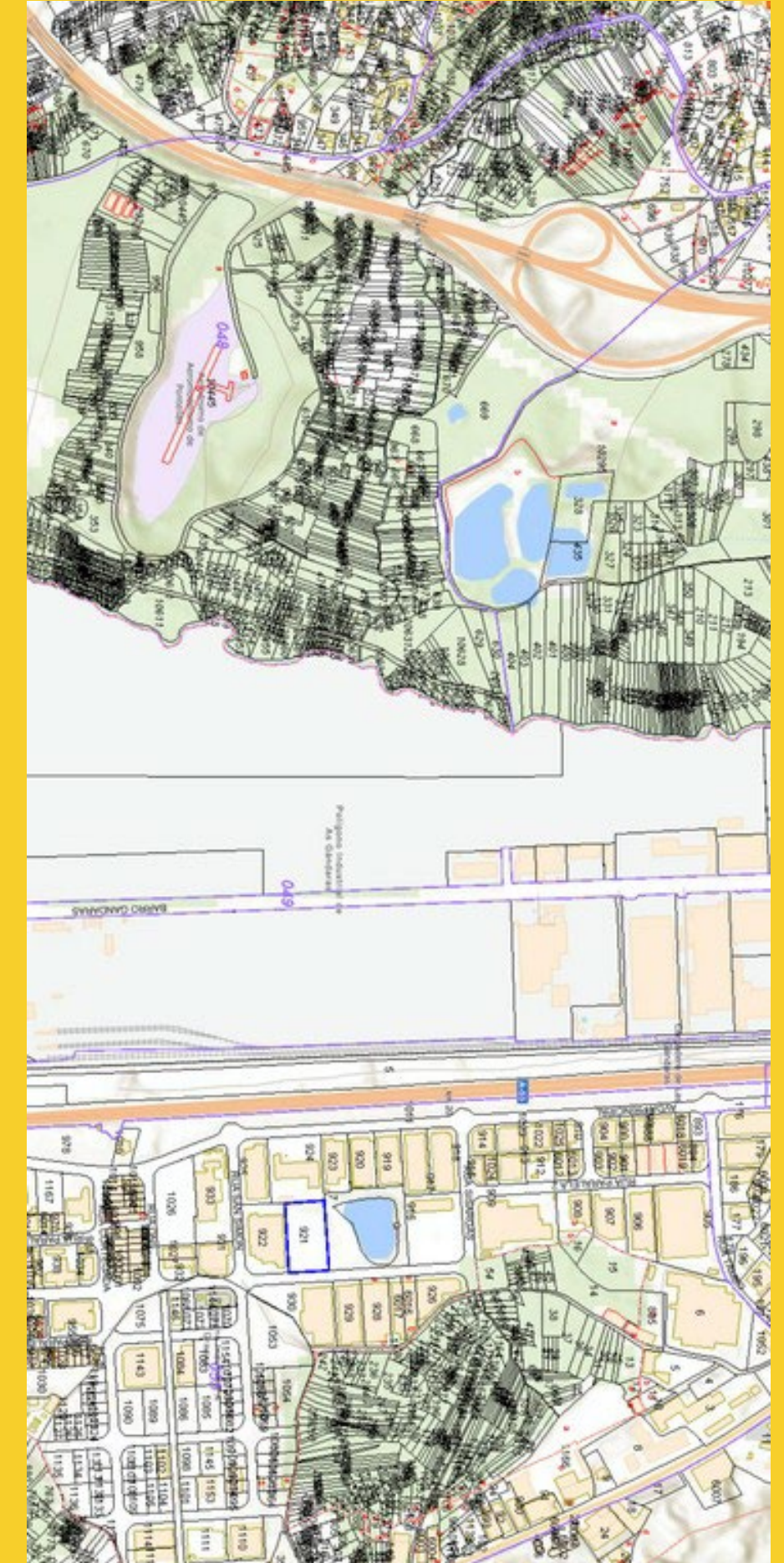
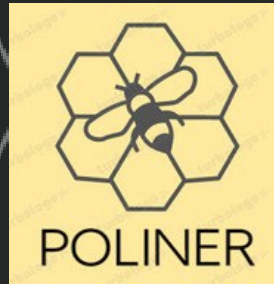
Selección

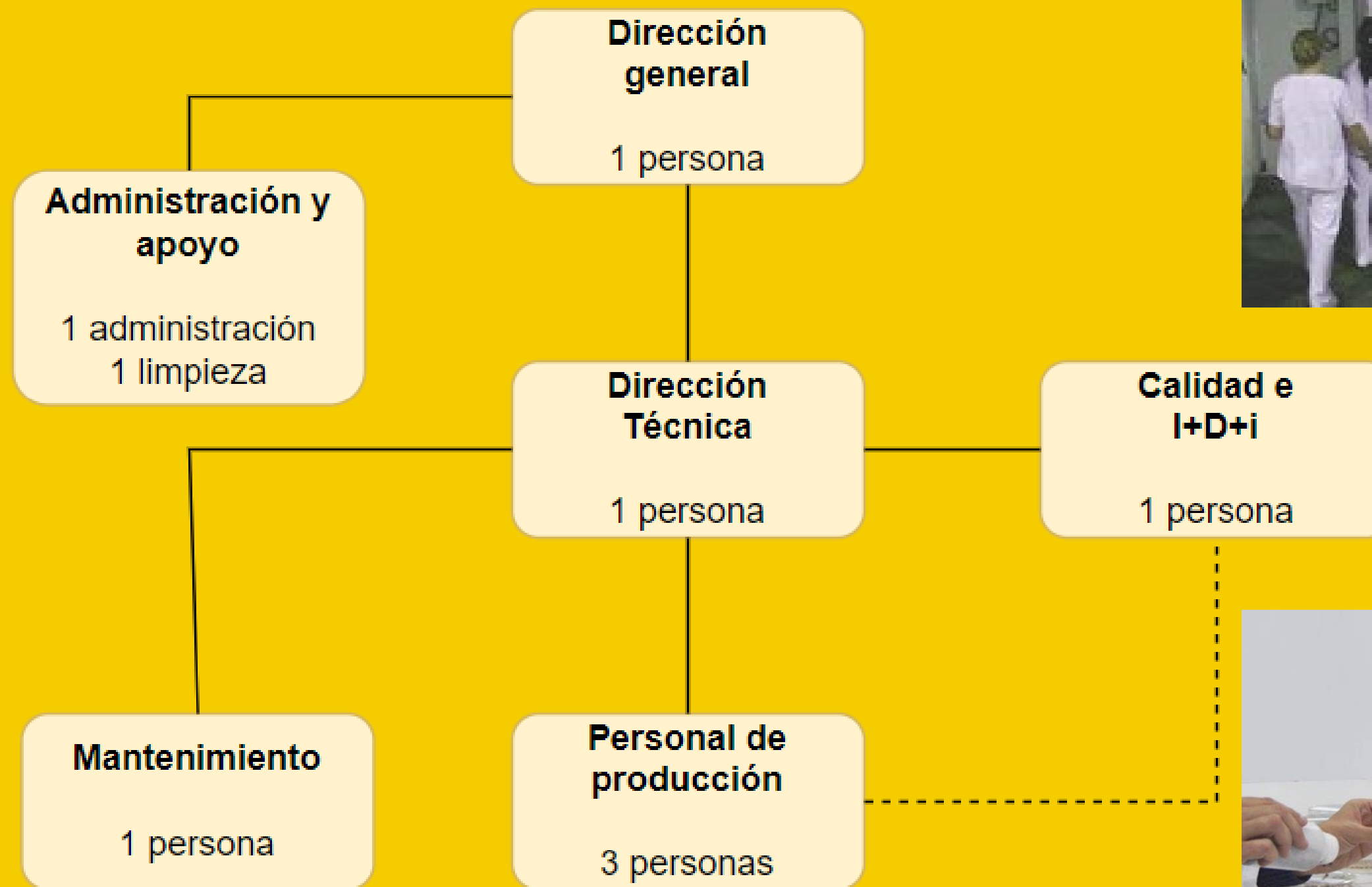


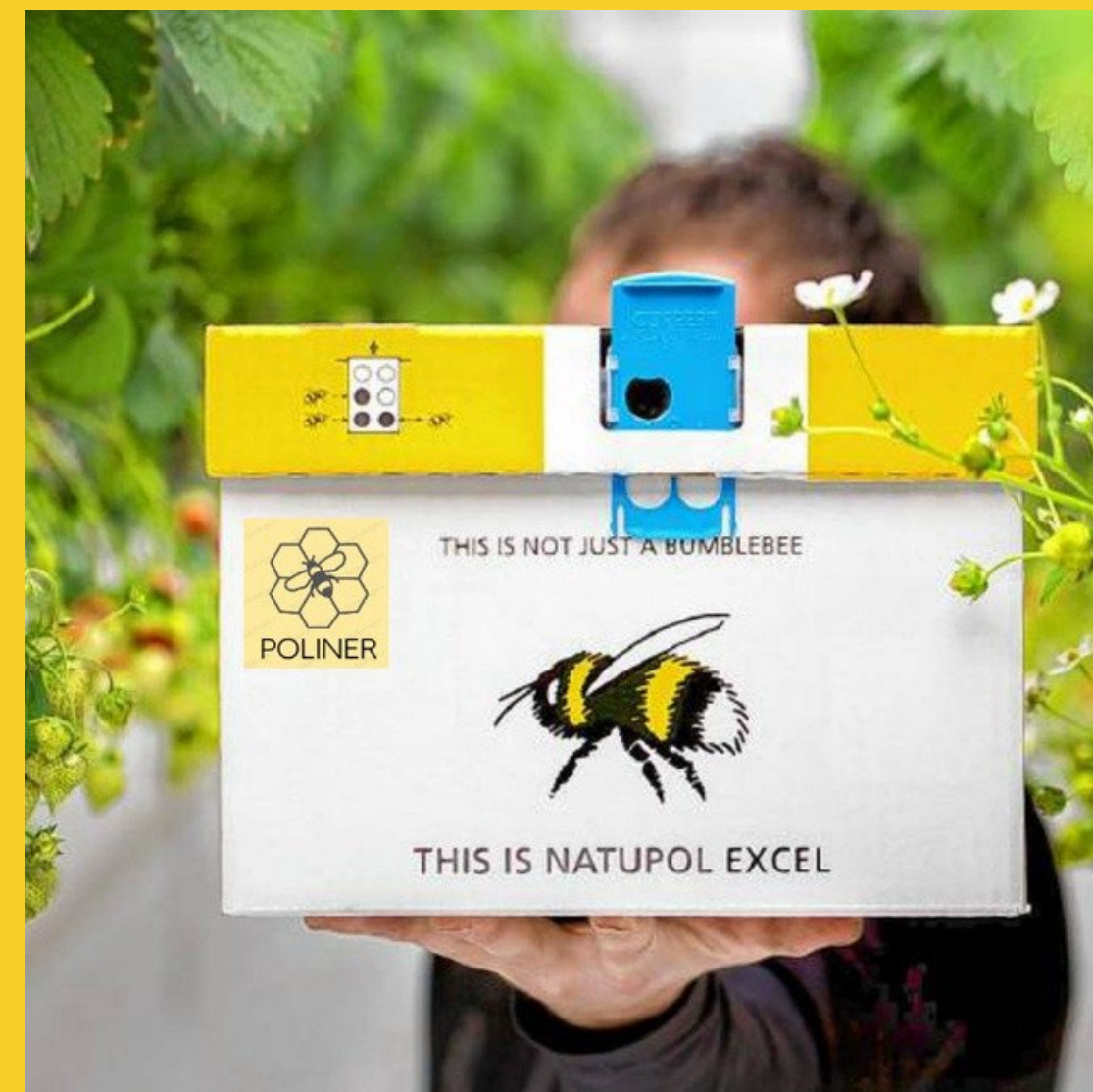


Escarabajo de la colmena (*Aethina tumida* M.)

¿Dónde estamos?



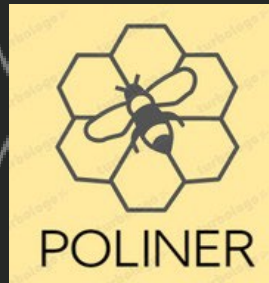




Inversión 2.496.611,57 euros

33.000 colmenas al año

Beneficio de 287.791,79 euros/año.



**Ofrecemos trabajadores eficientes, económicos,
ecológicos e incansables**



Garantizamos grandes cosechas