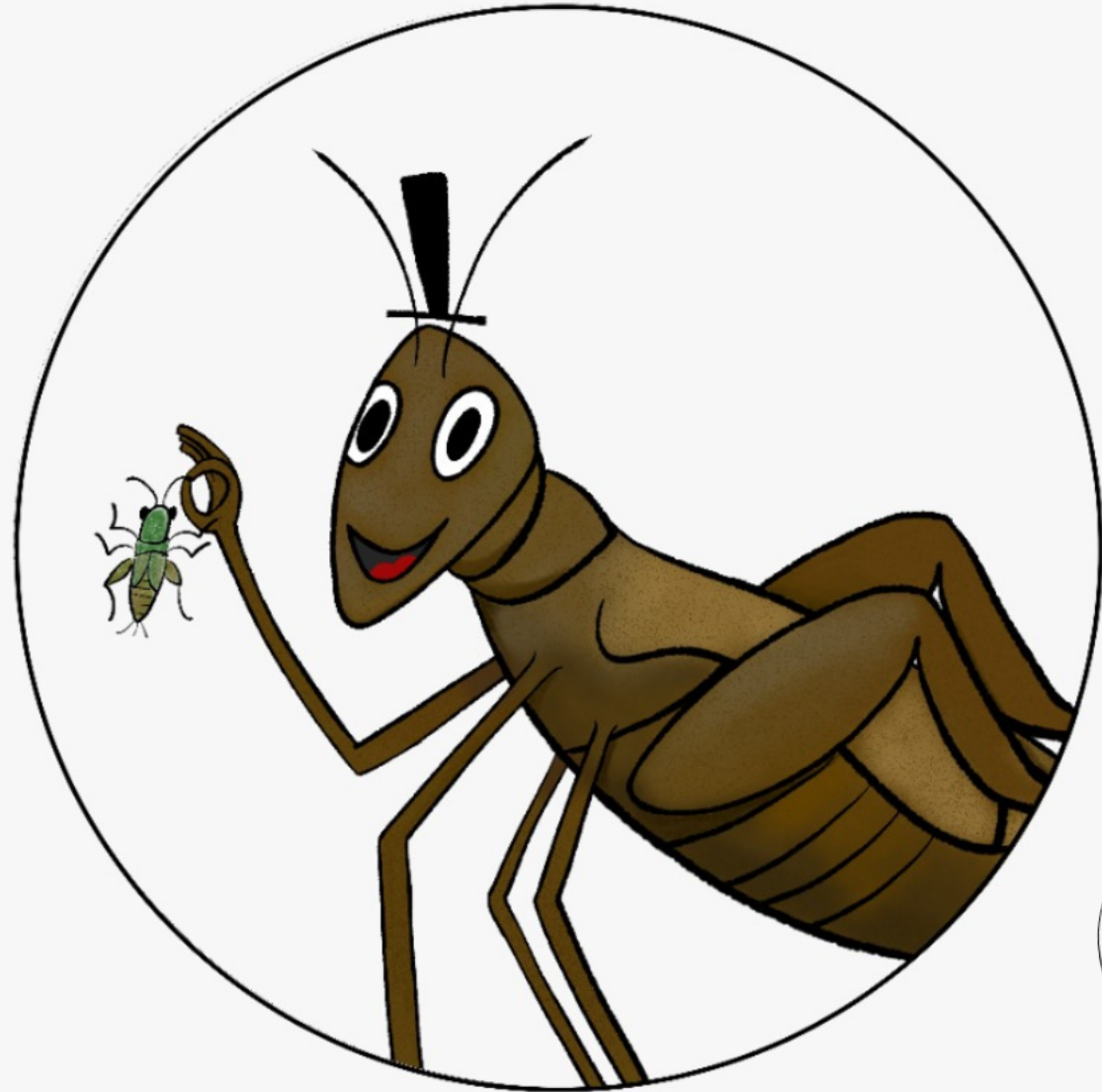




Universida deVigo

PAULA ANDRES RODRIGUEZ
BEATRIZ CRESPO VIRULEG
ALEJANDRO FIGUEROA RODRIGUEZ
NAHIR RODRIGUEZ COSTAS

UXÍA LEYENDA LEYENDA
MARTA LÓPEZ RODRÍGUEZ
CARLOS ANDRÉS ORTIZ JEMIO

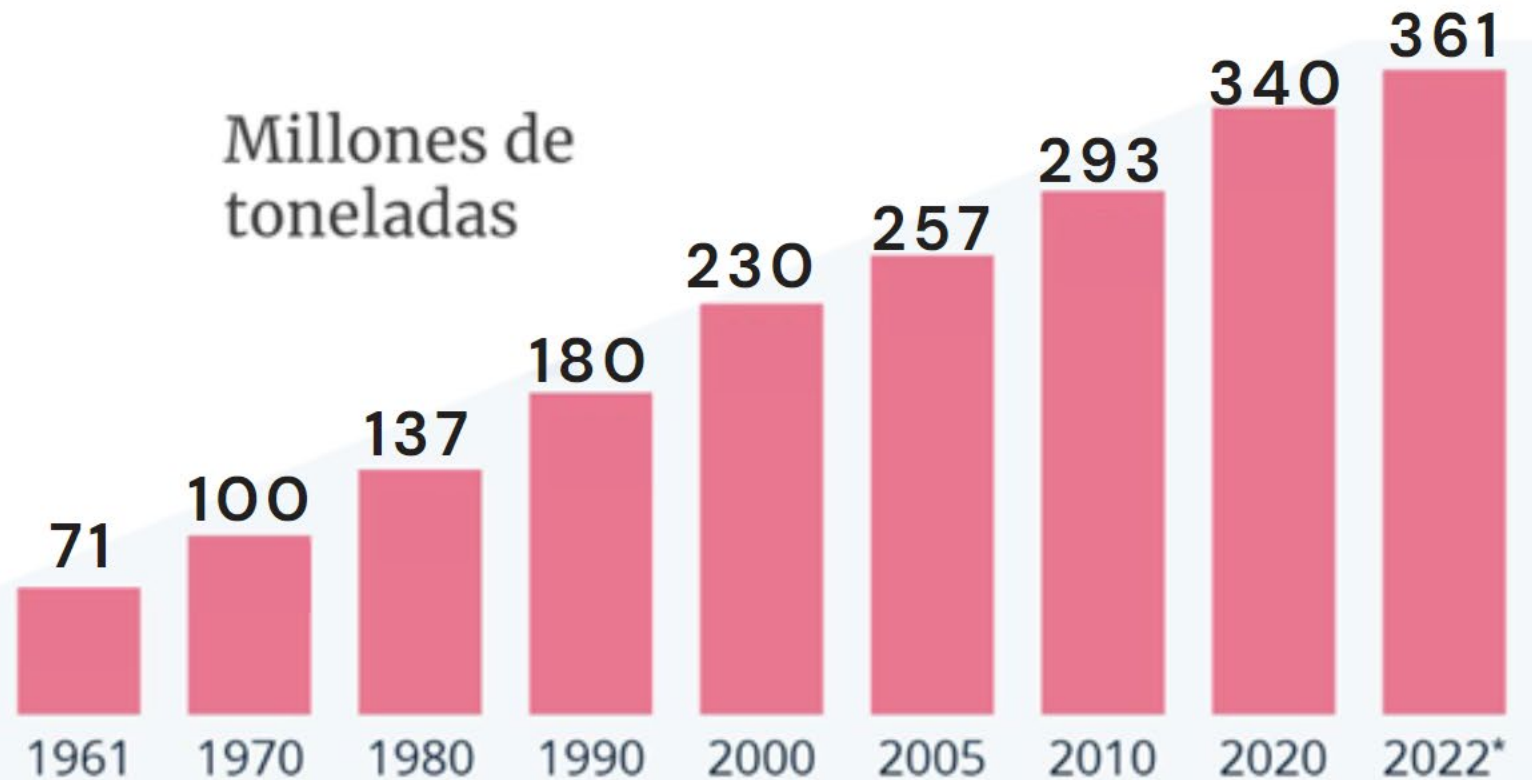


Acheta Rico



SITUACIÓN ACTUAL

Producción de carne a nivel mundial



Fuente: FAO,
2022



OBJETIVO



Diseño de una granja
de grillos para la
producción de harina
y aperitivos





Acheta domesticus L.



FUENTE DE
PROTEÍNA



ALTO
RENDIMIENTO
PRODUCTIVO



SOSTENIBILIDAD



2.835 g CO₂

114 g CH₄

170 mg

1 KG DE PROTEÍNA CORPORAL



Emisiones gases efecto invernadero



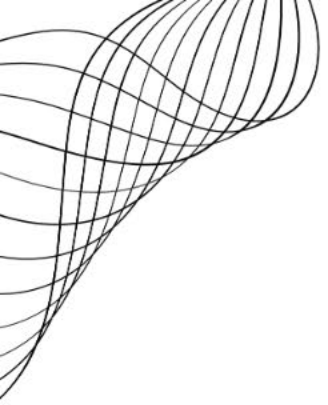
Emisiones de amonio



1.539 g CO₂

<5 g CH₄

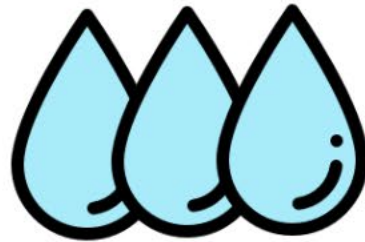
5.4 mg



**1 KG DE PROTEÍNA
CORPORAL**



154000 L



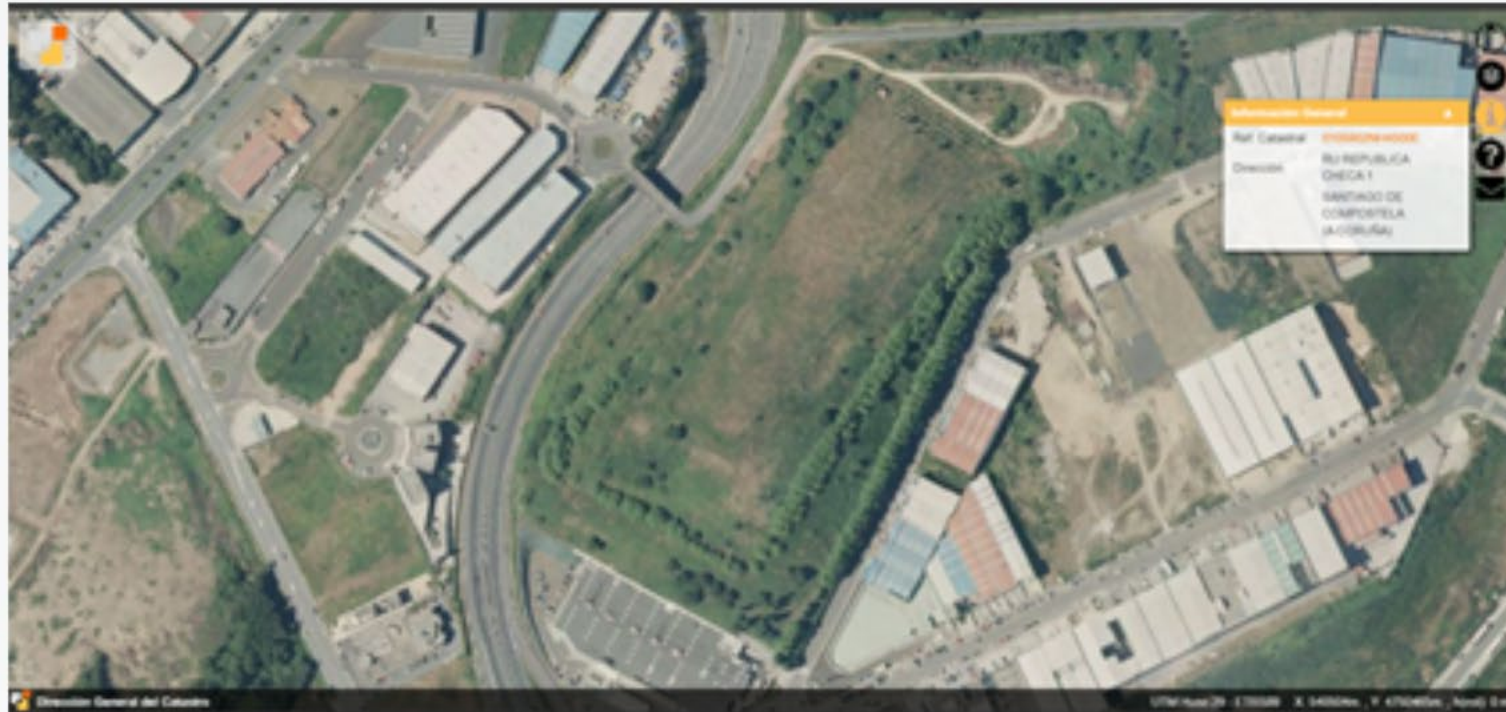
Requerimiento
de agua

15.4 L



LOCALIZACIÓN

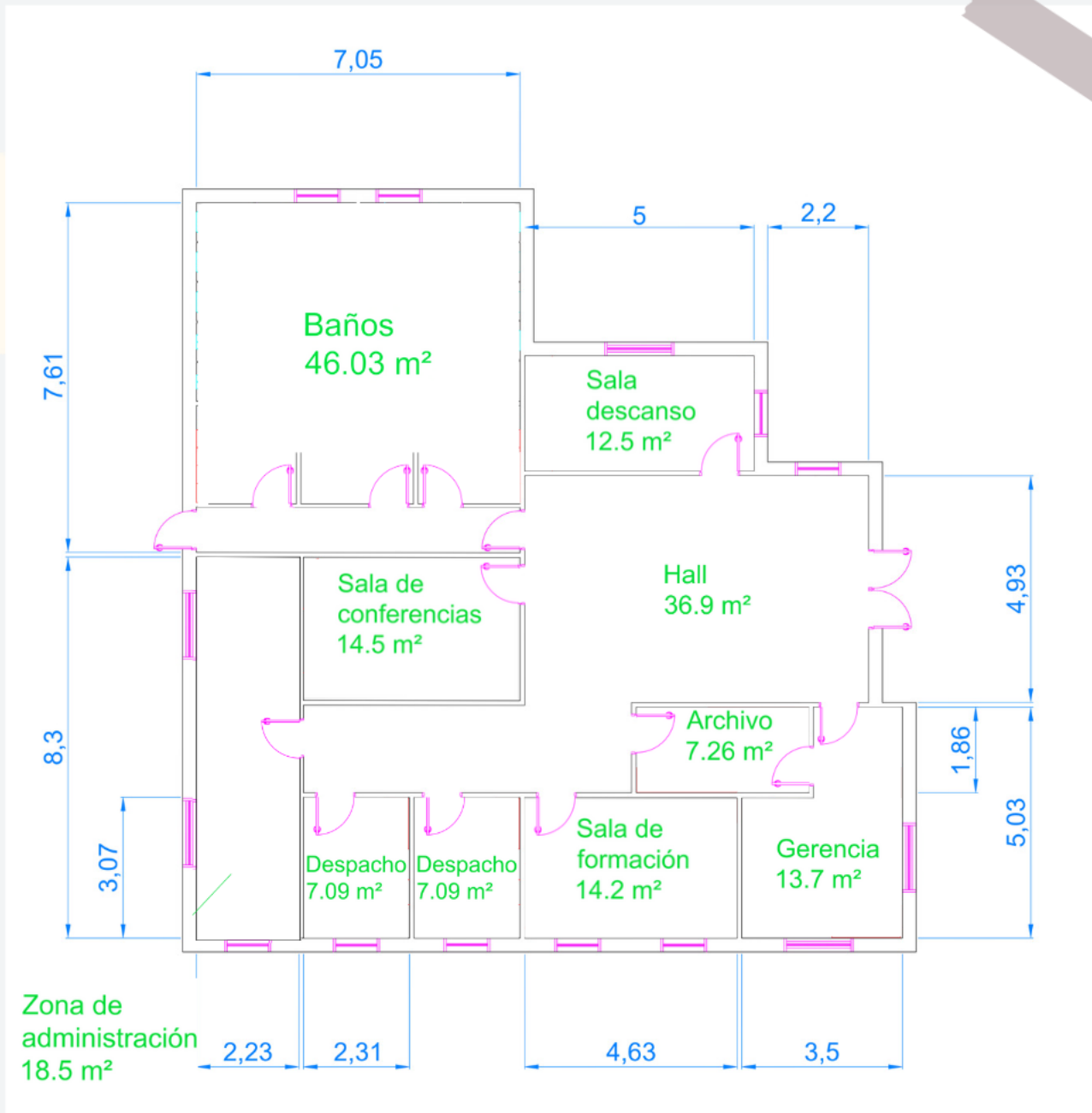
52000 m²



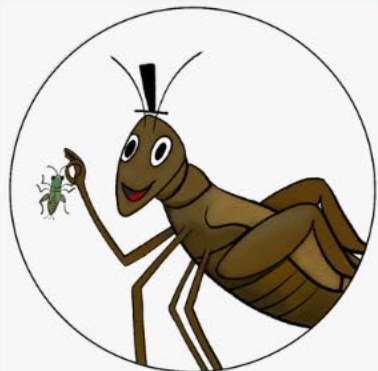
PLANTA DE PERSONAL



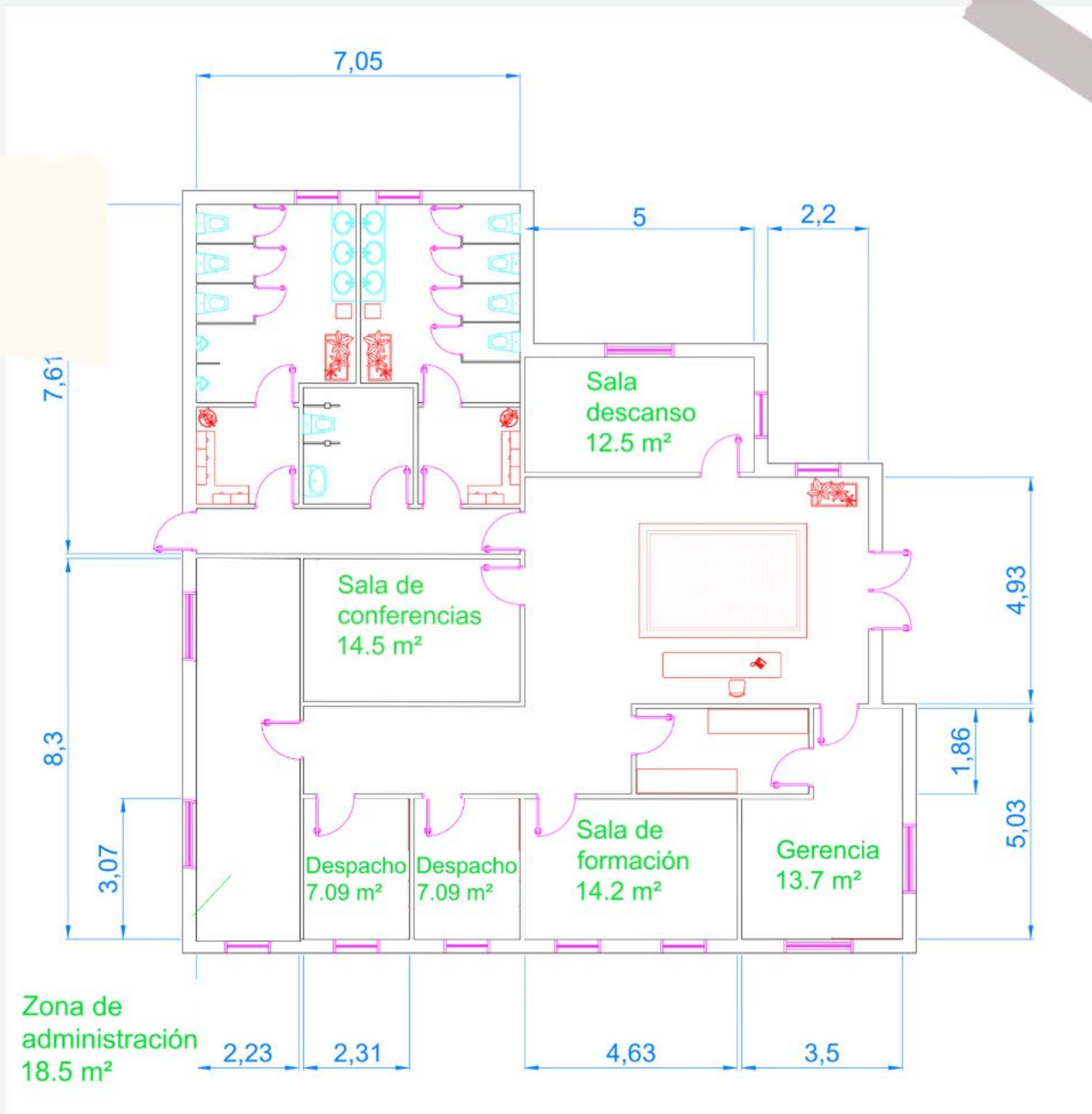
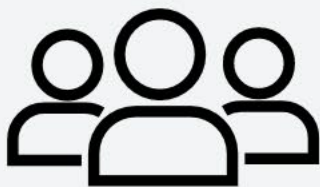
Acheta Rico



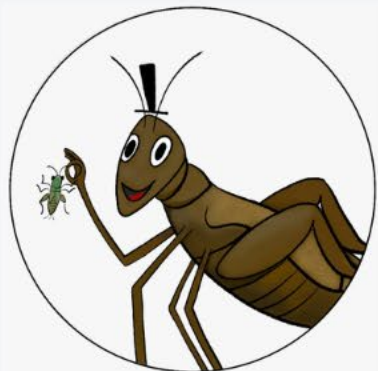
PLANTA DE PERSONAL



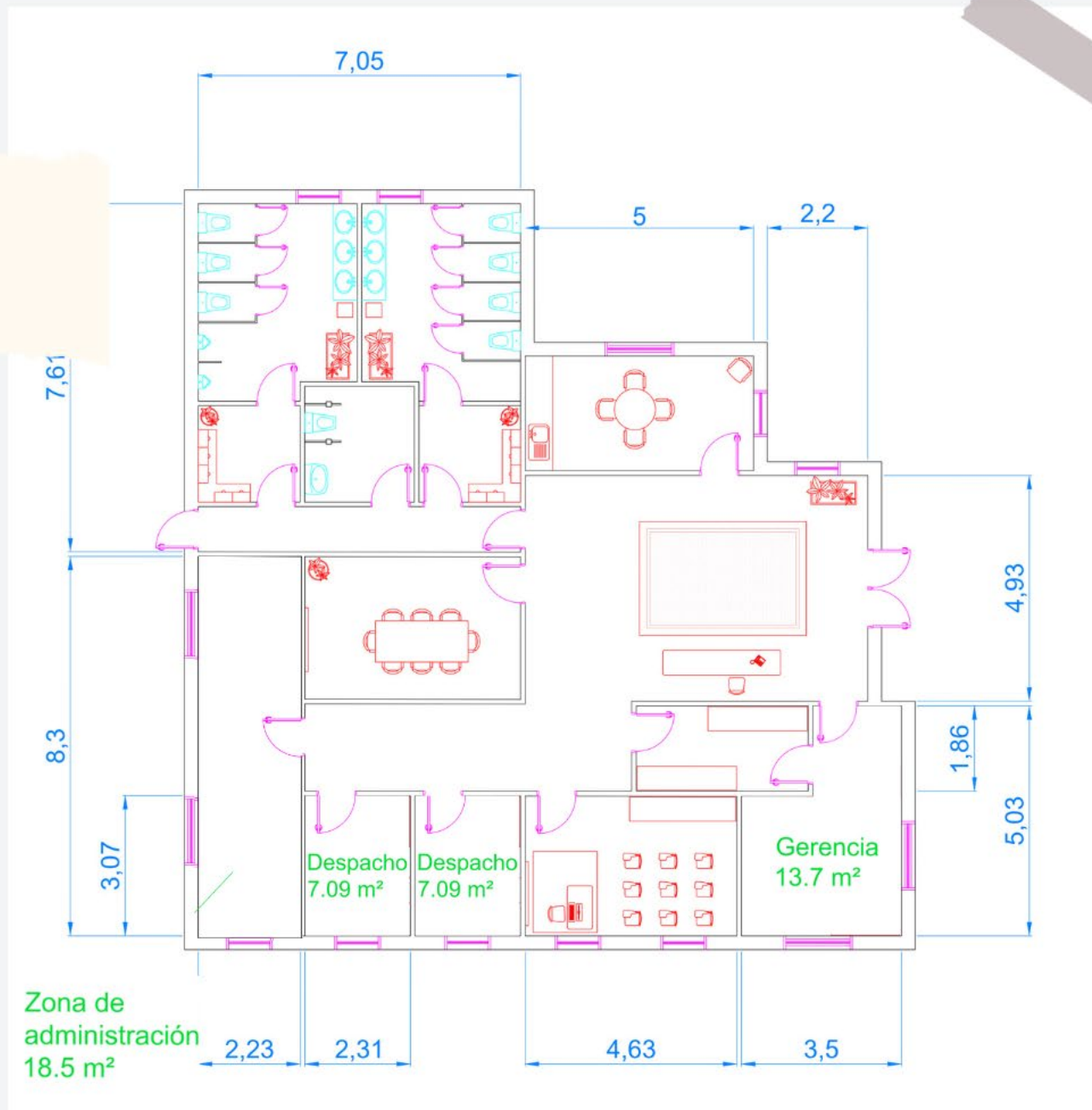
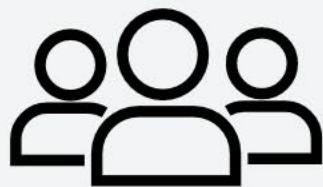
Achetá Rico



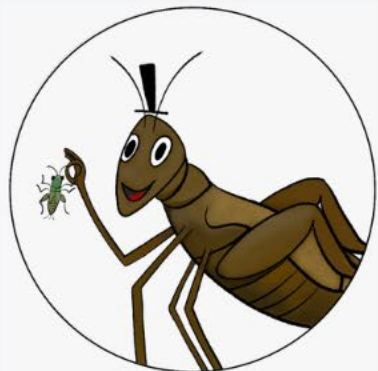
PLANTA DE PERSONAL



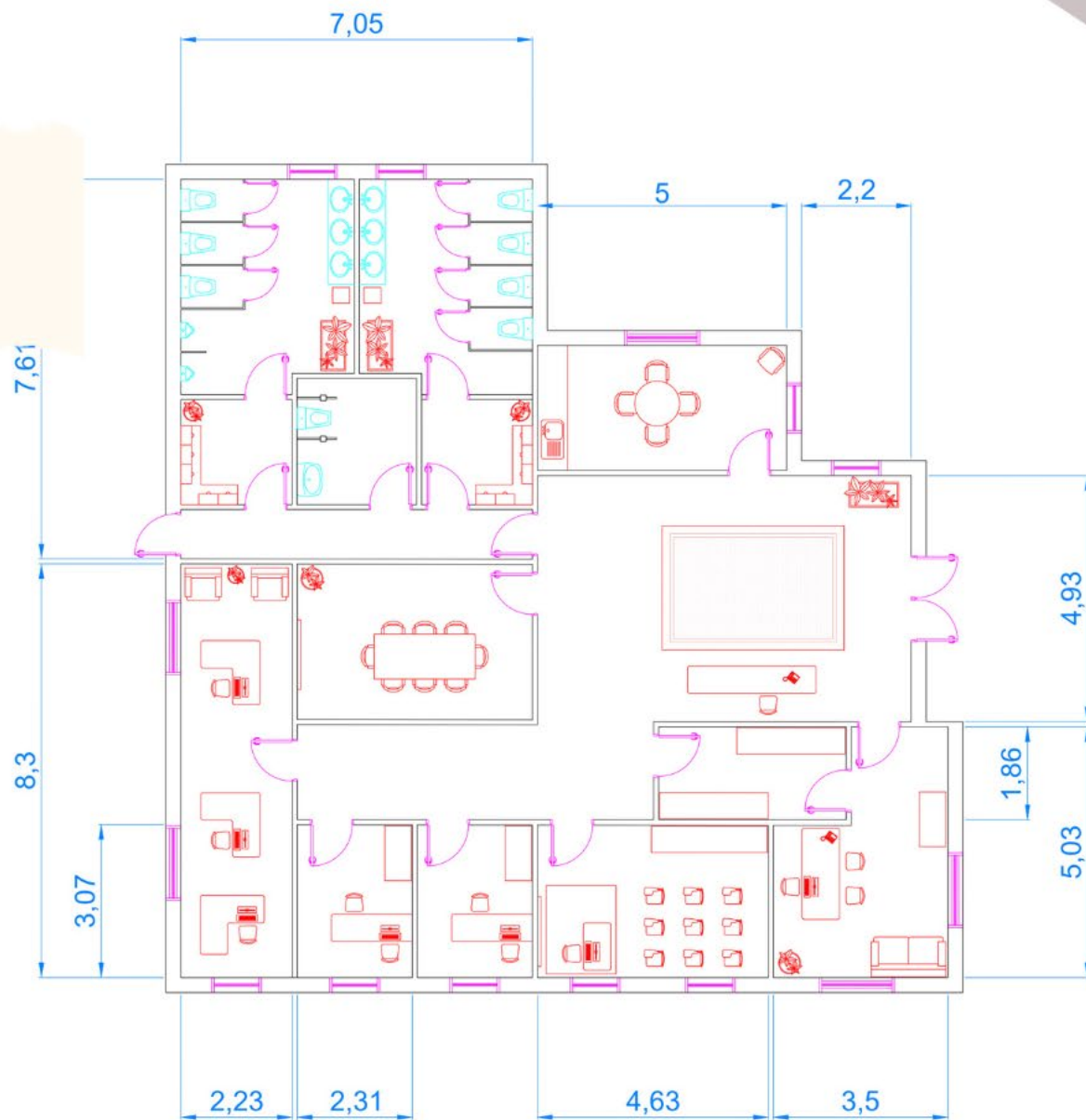
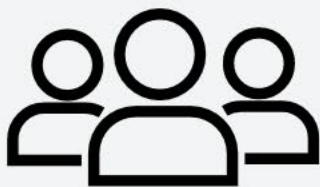
Achetá Rico



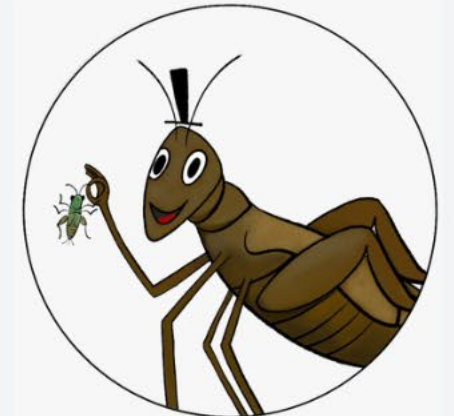
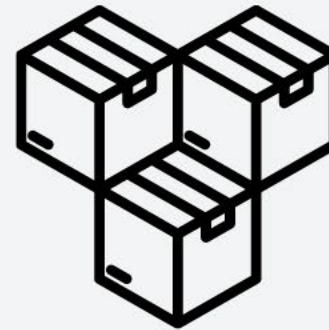
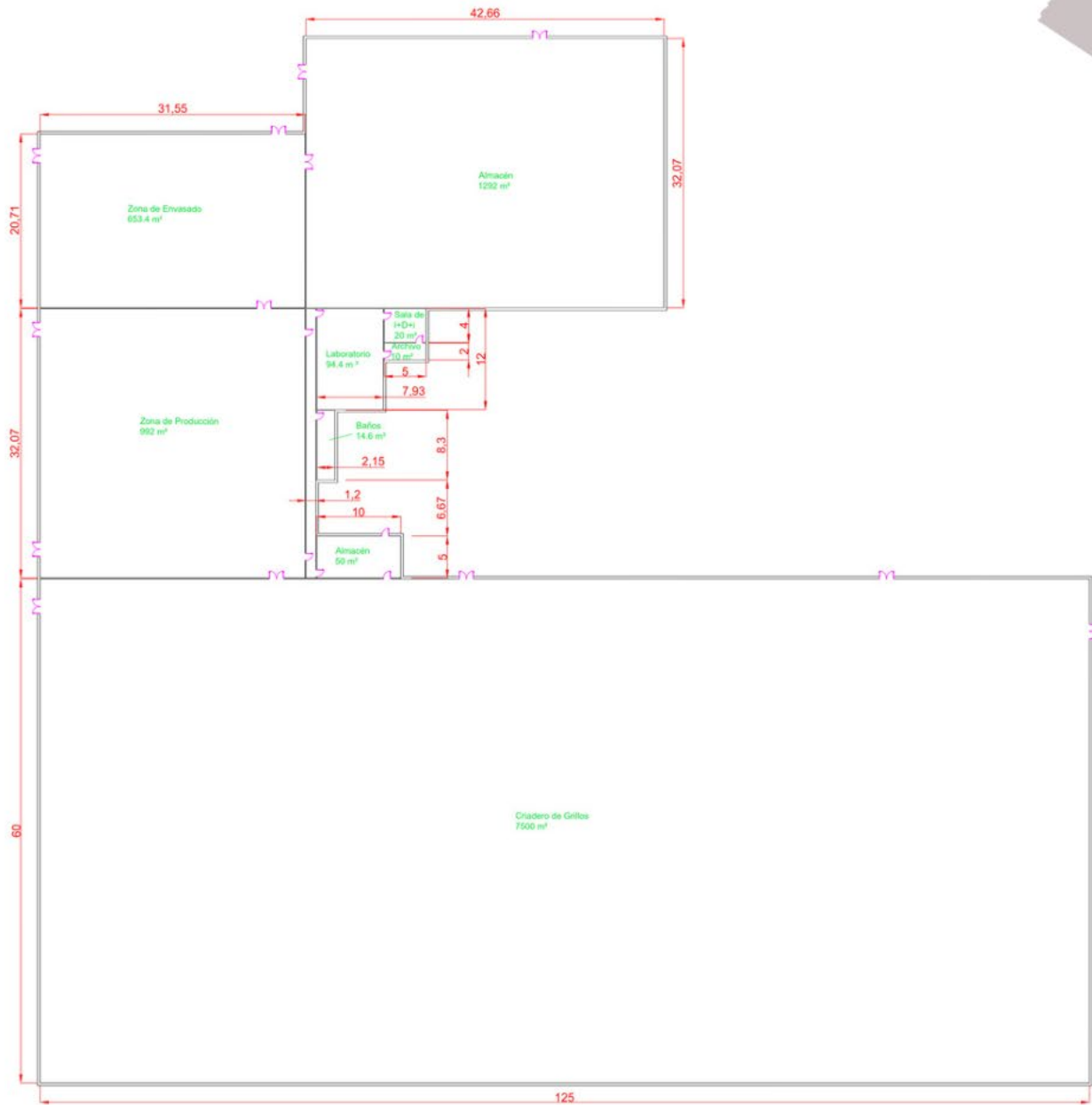
PLANTA DE PERSONAL



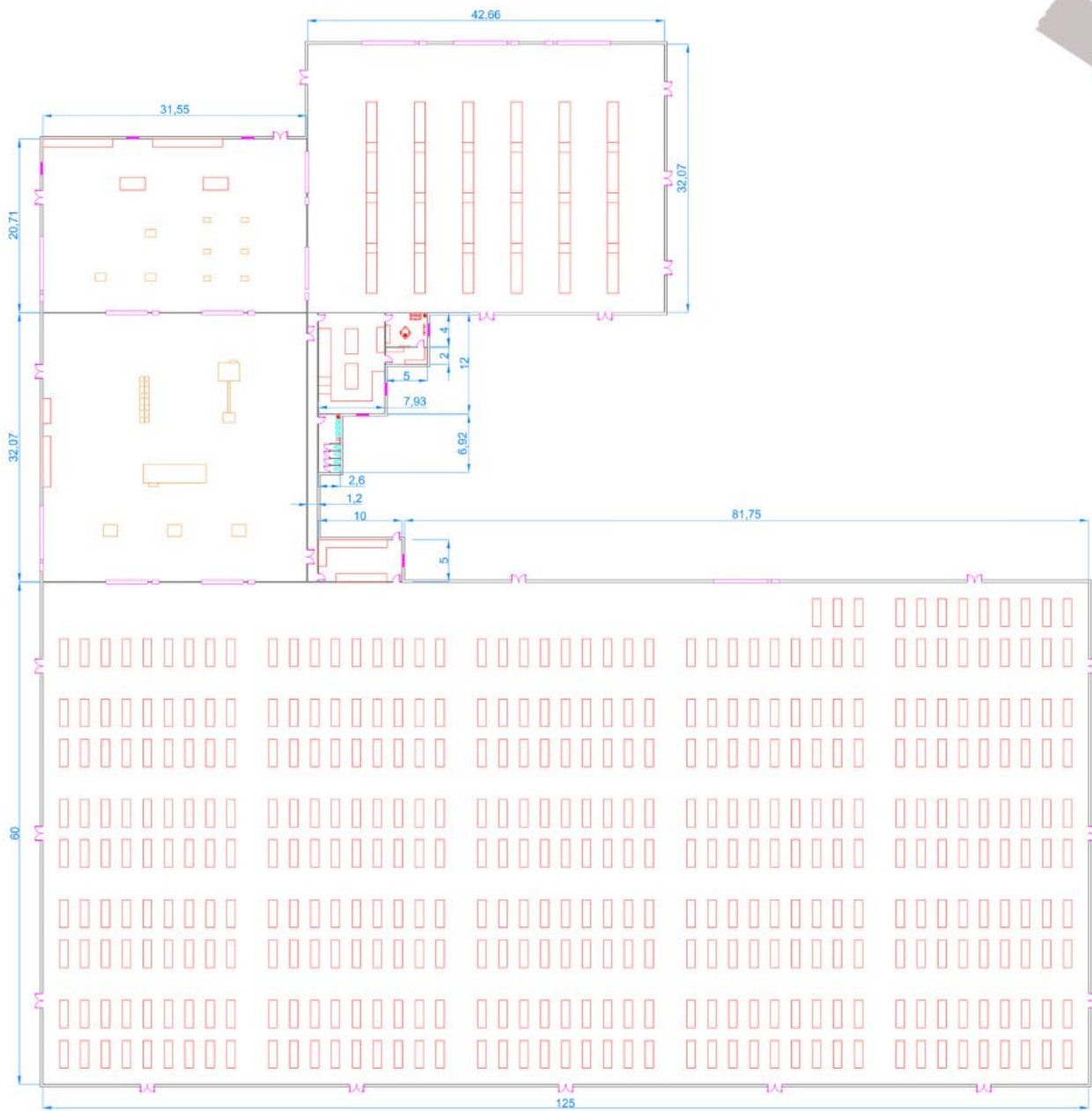
Achea Rico



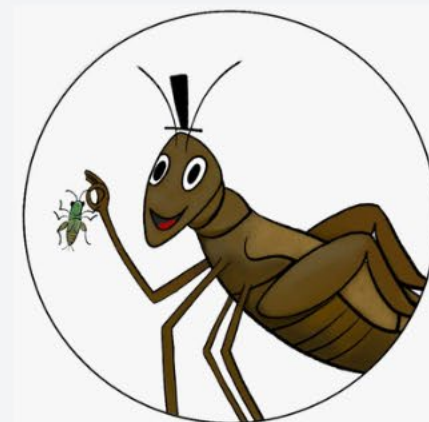
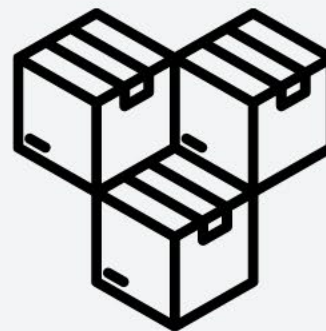
PLANTA DE PRODUCCIÓN



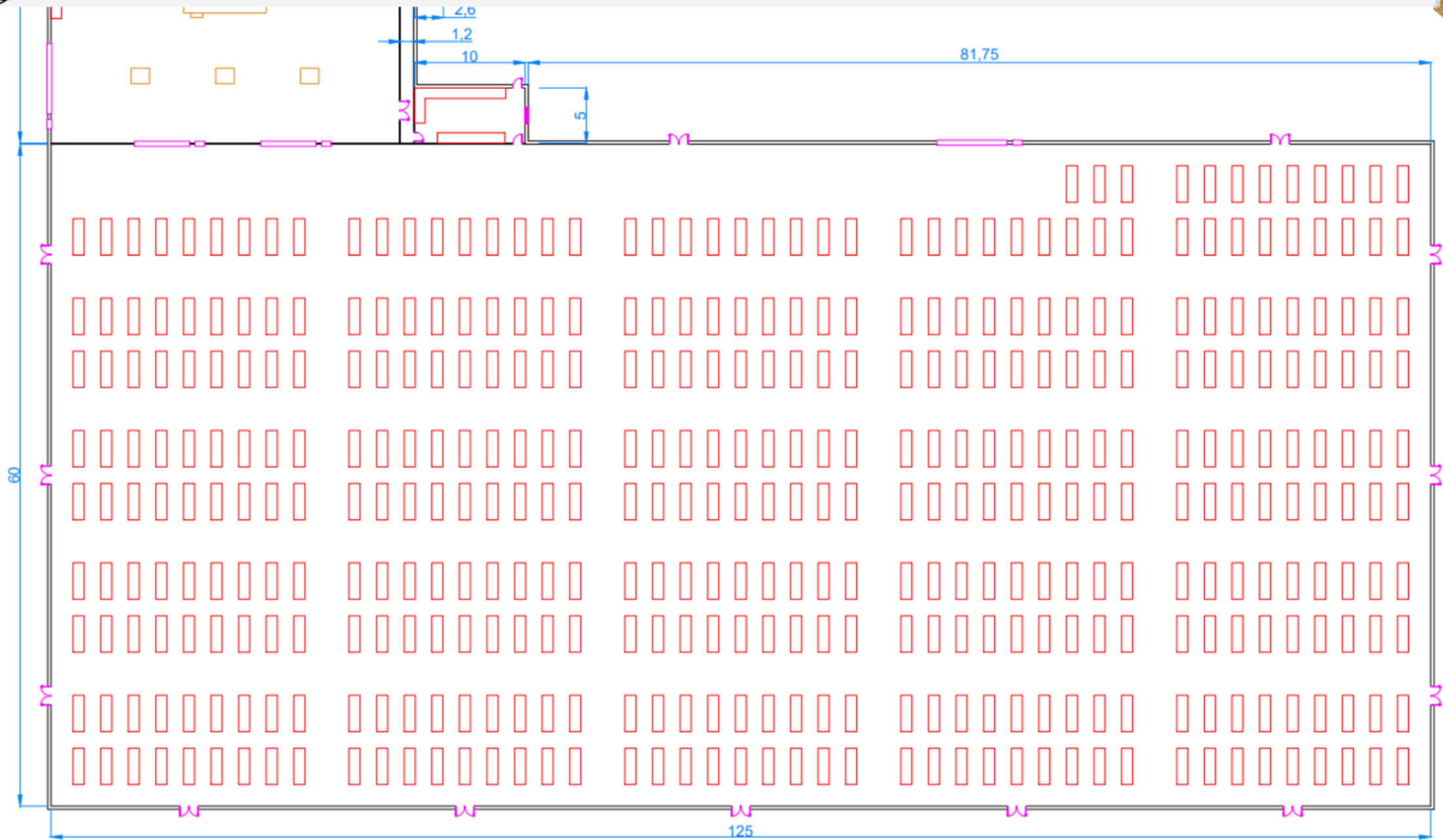
Acheta Rico

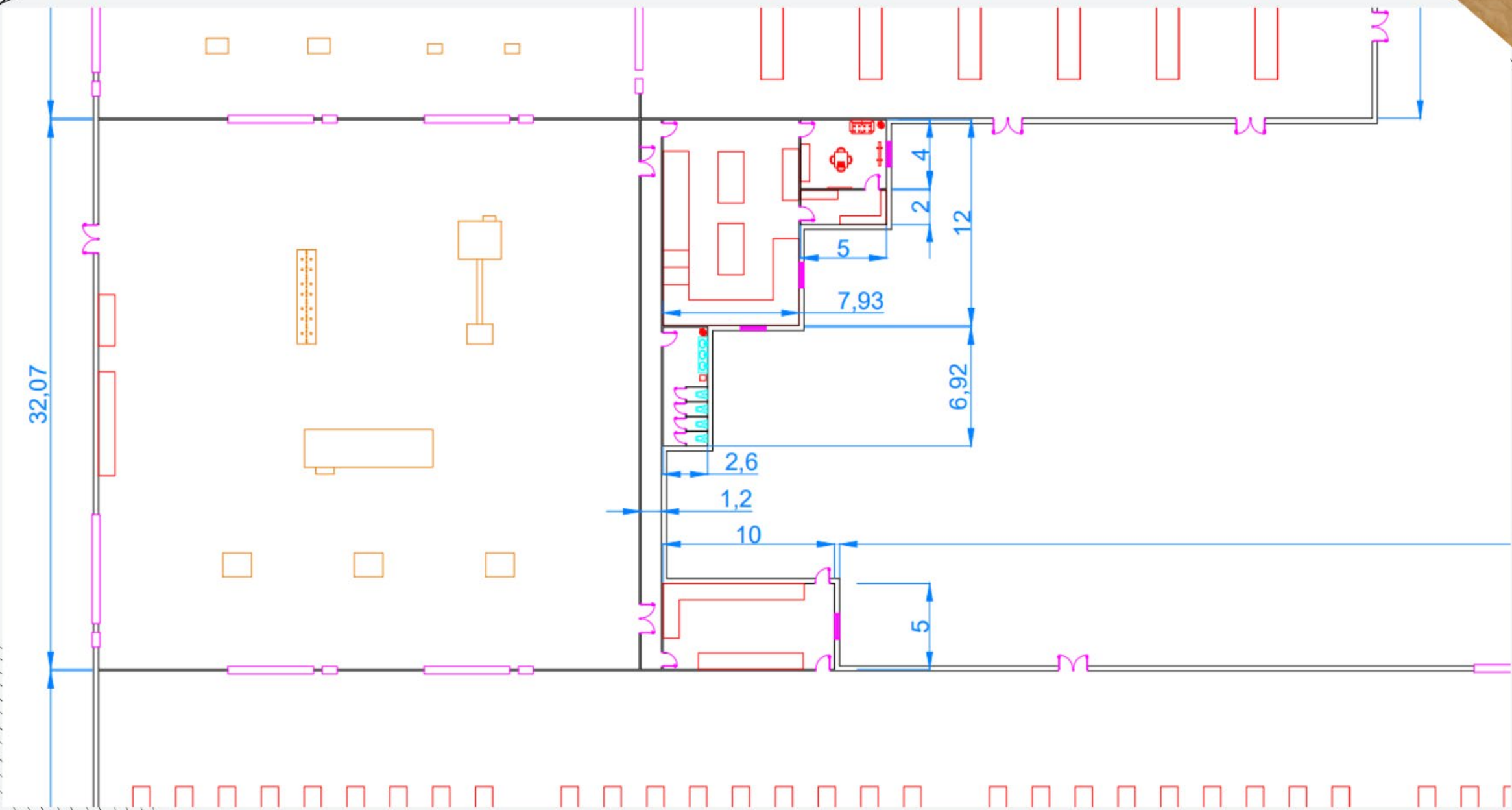


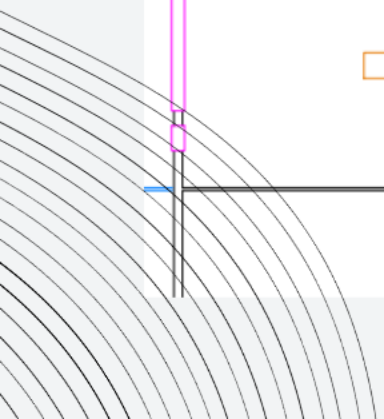
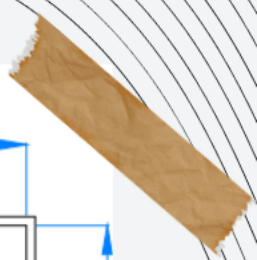
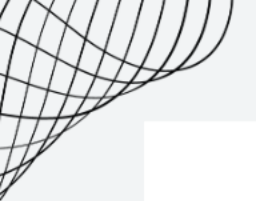
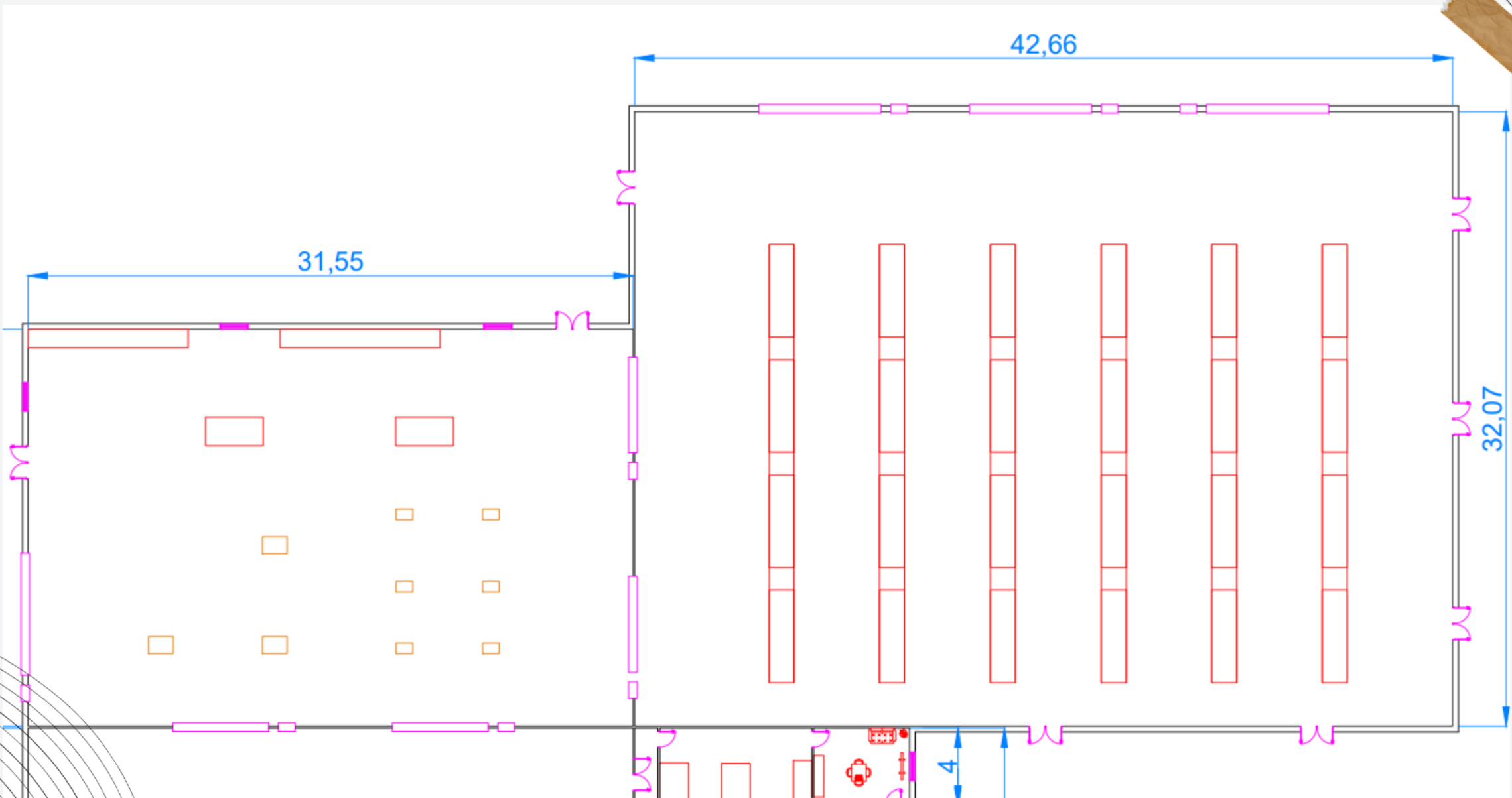
PLANTA DE PRODUCCIÓN

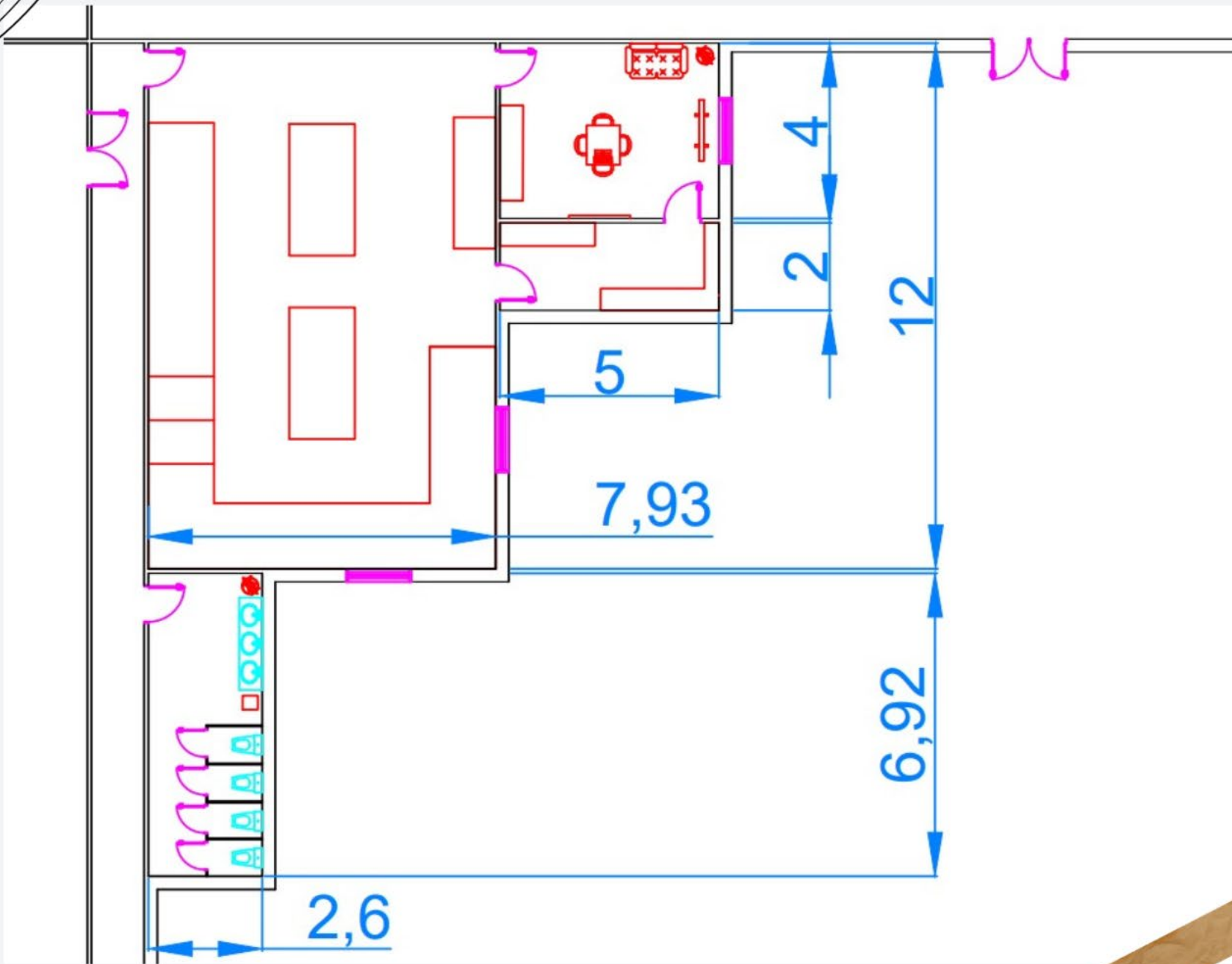


Acheta Rico





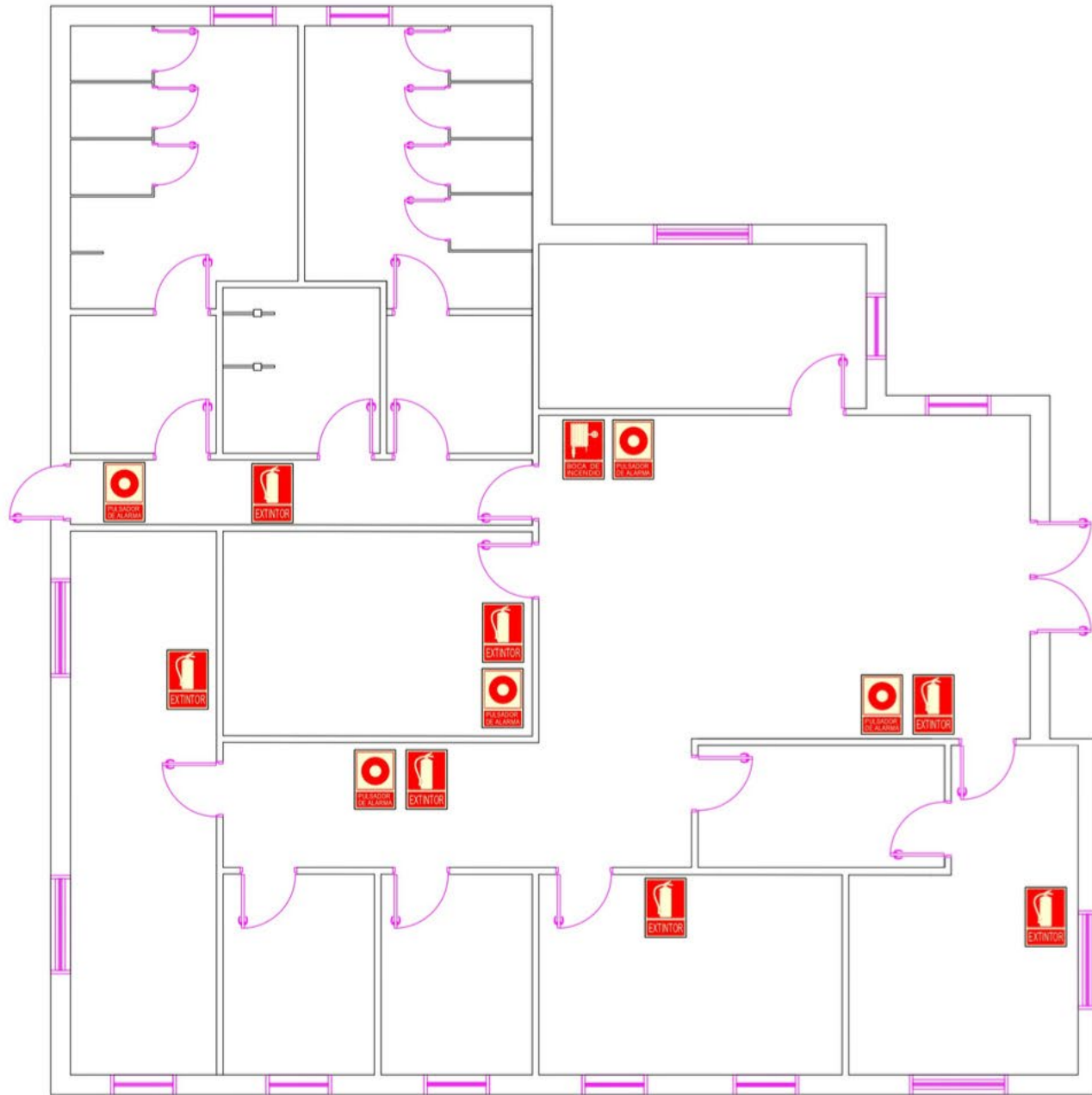




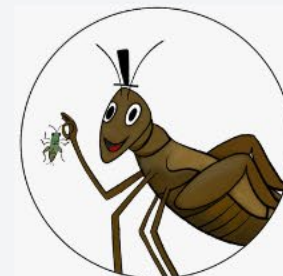
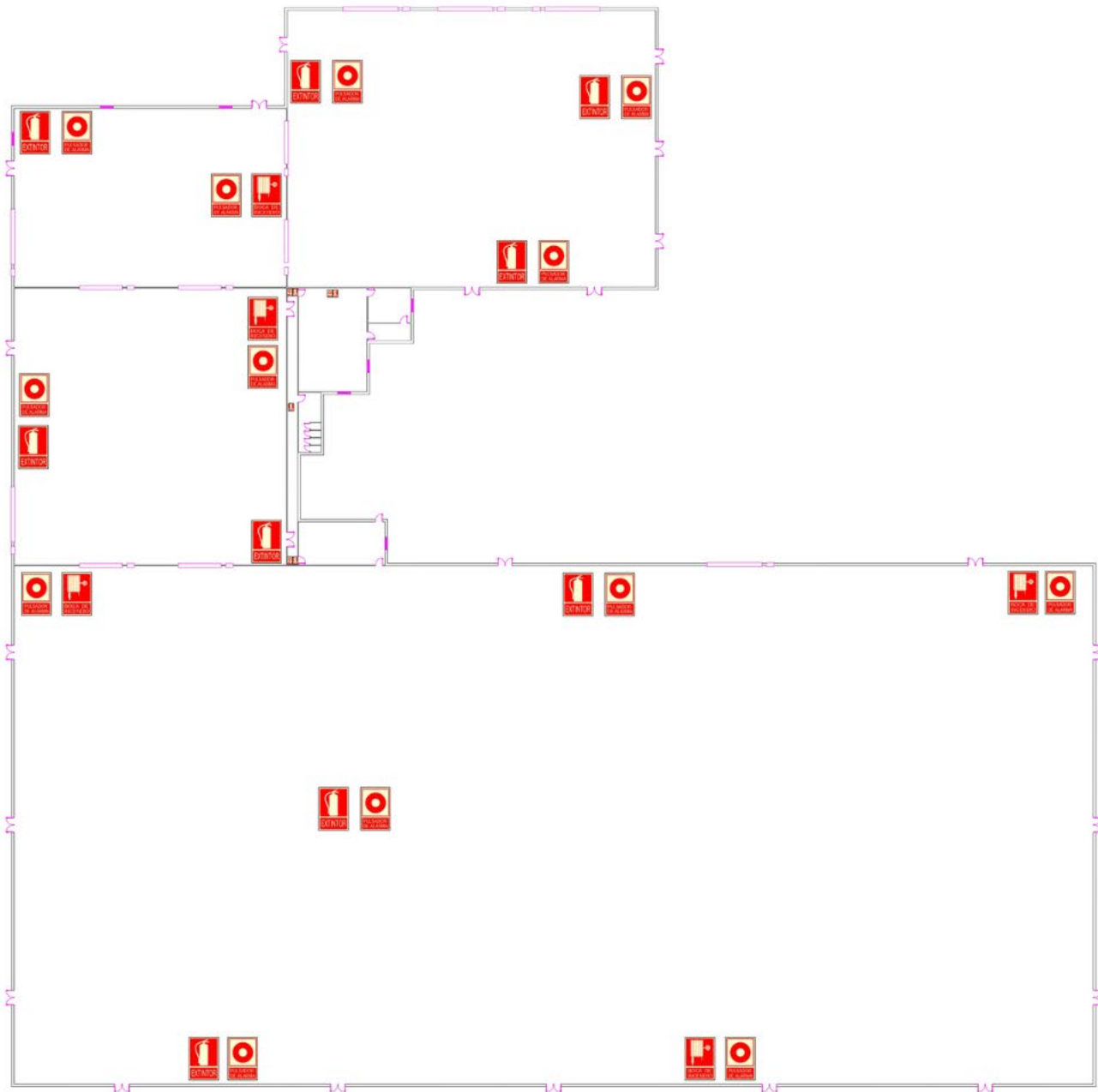
PLANO DE INCENDIOS



Achetarico

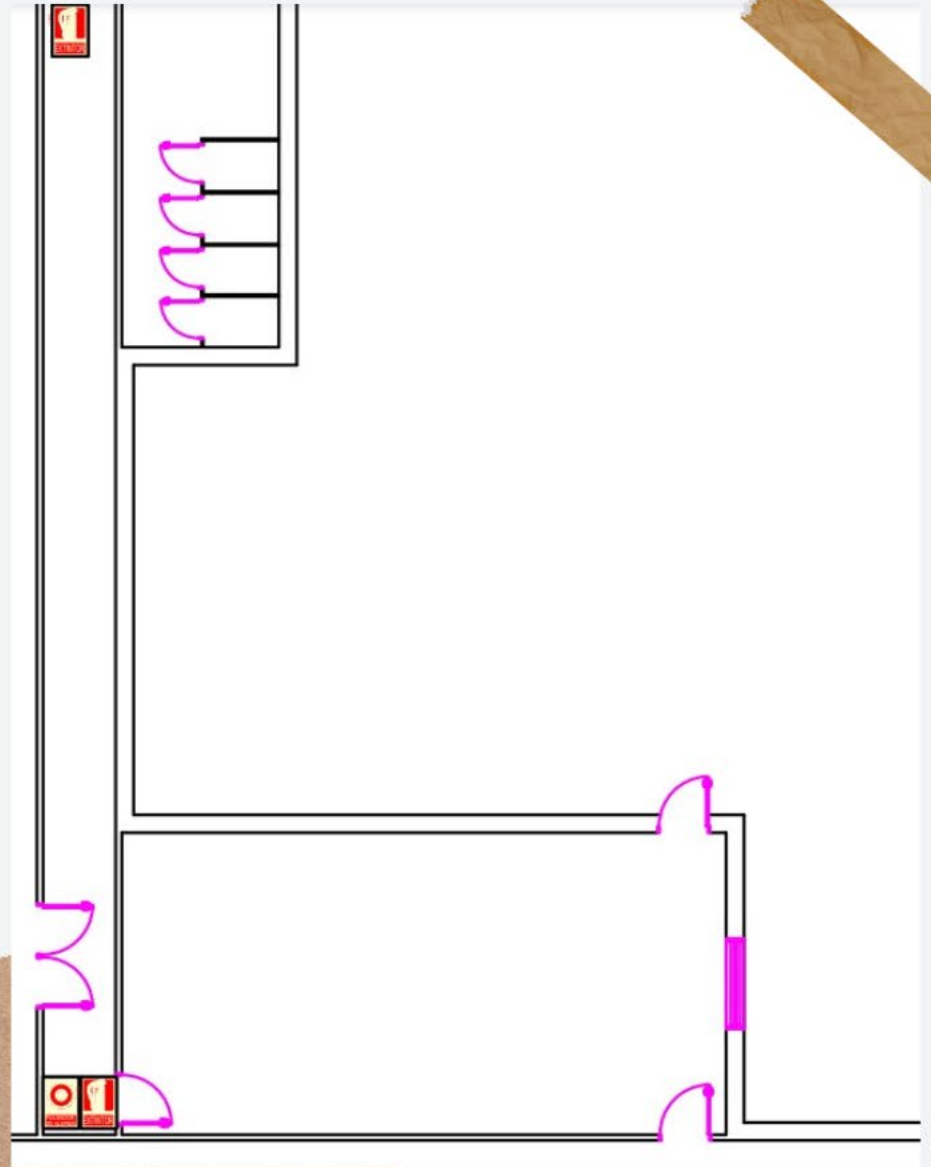
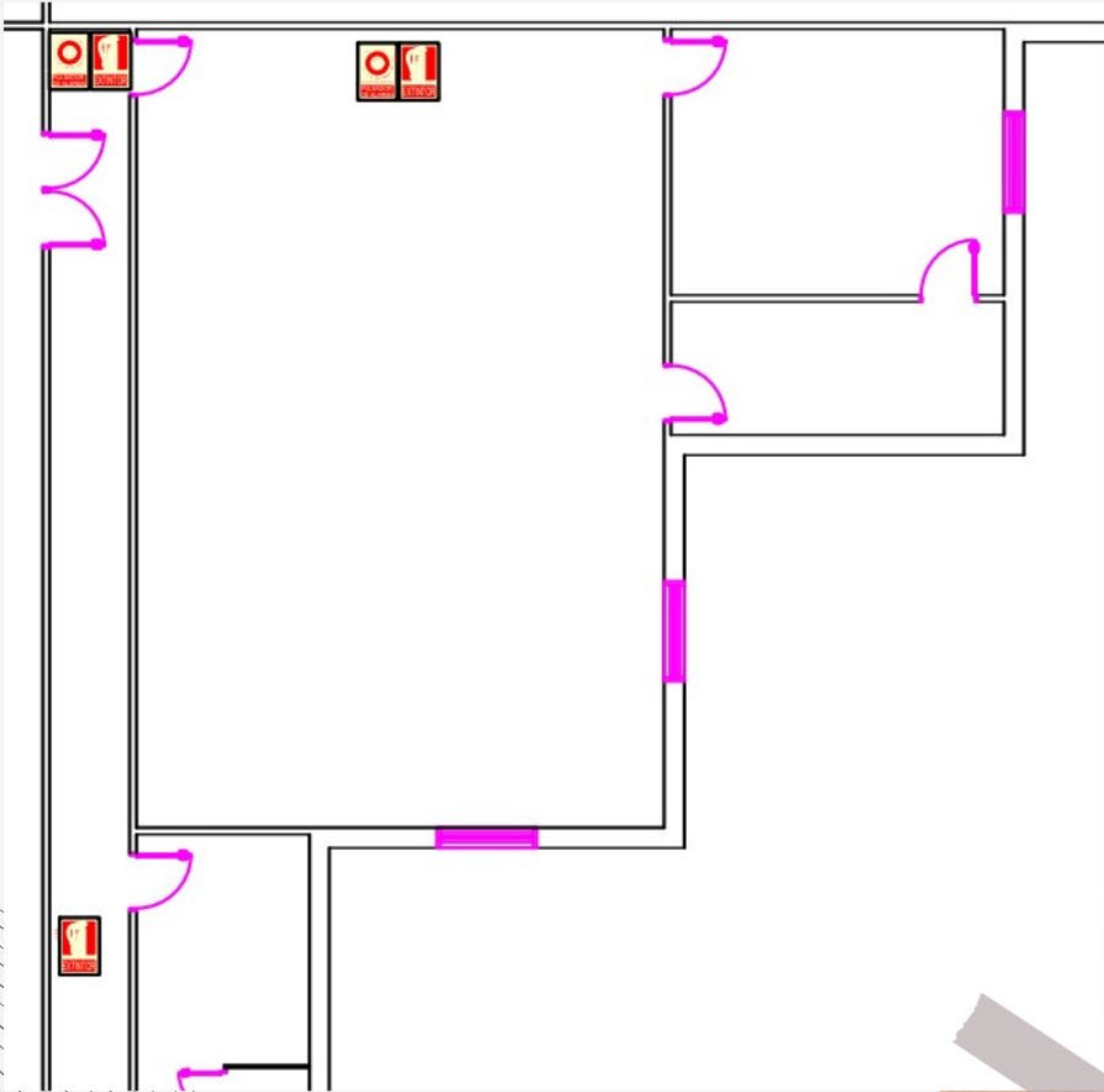


PLANO DE INCENDIOS

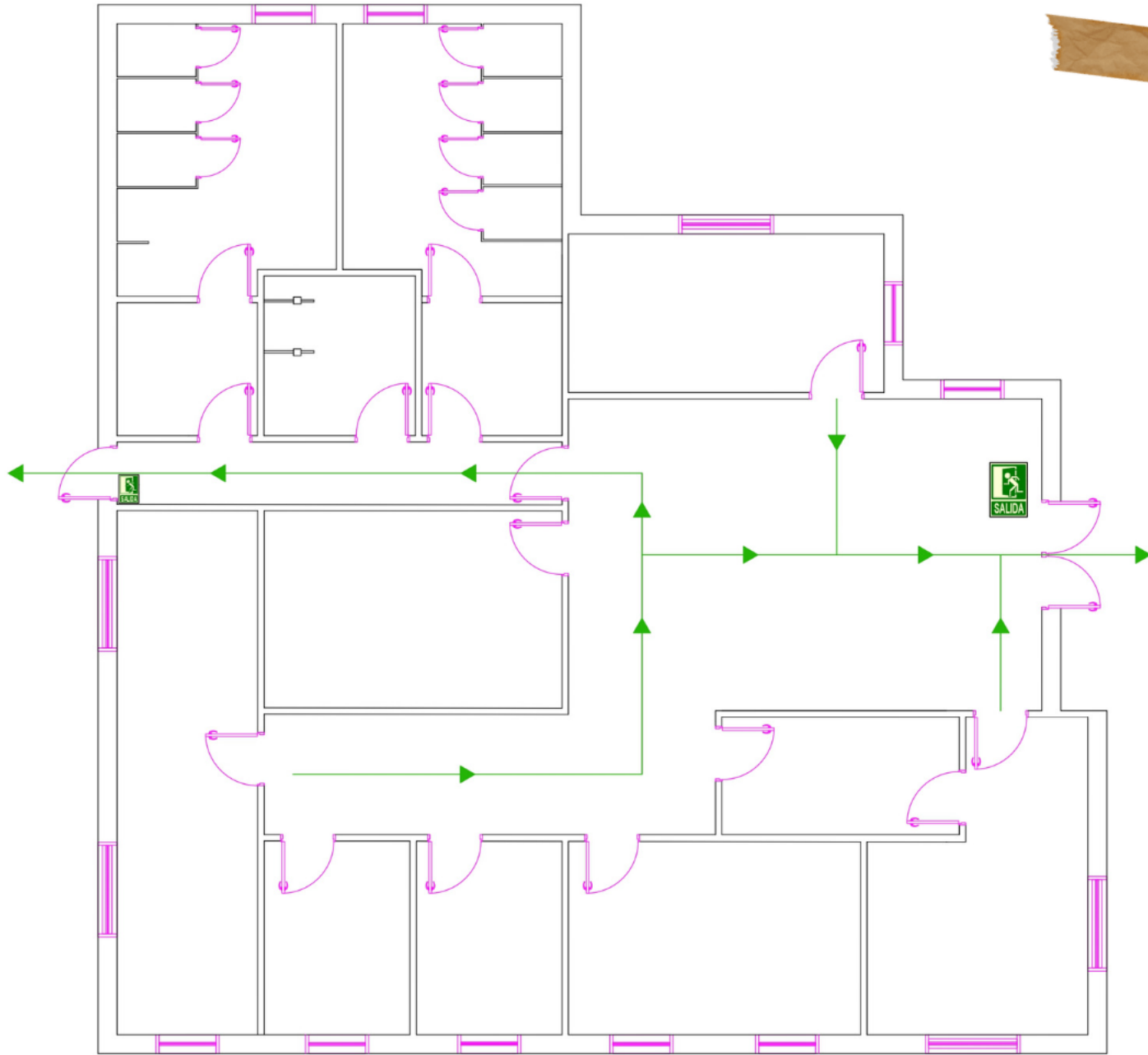


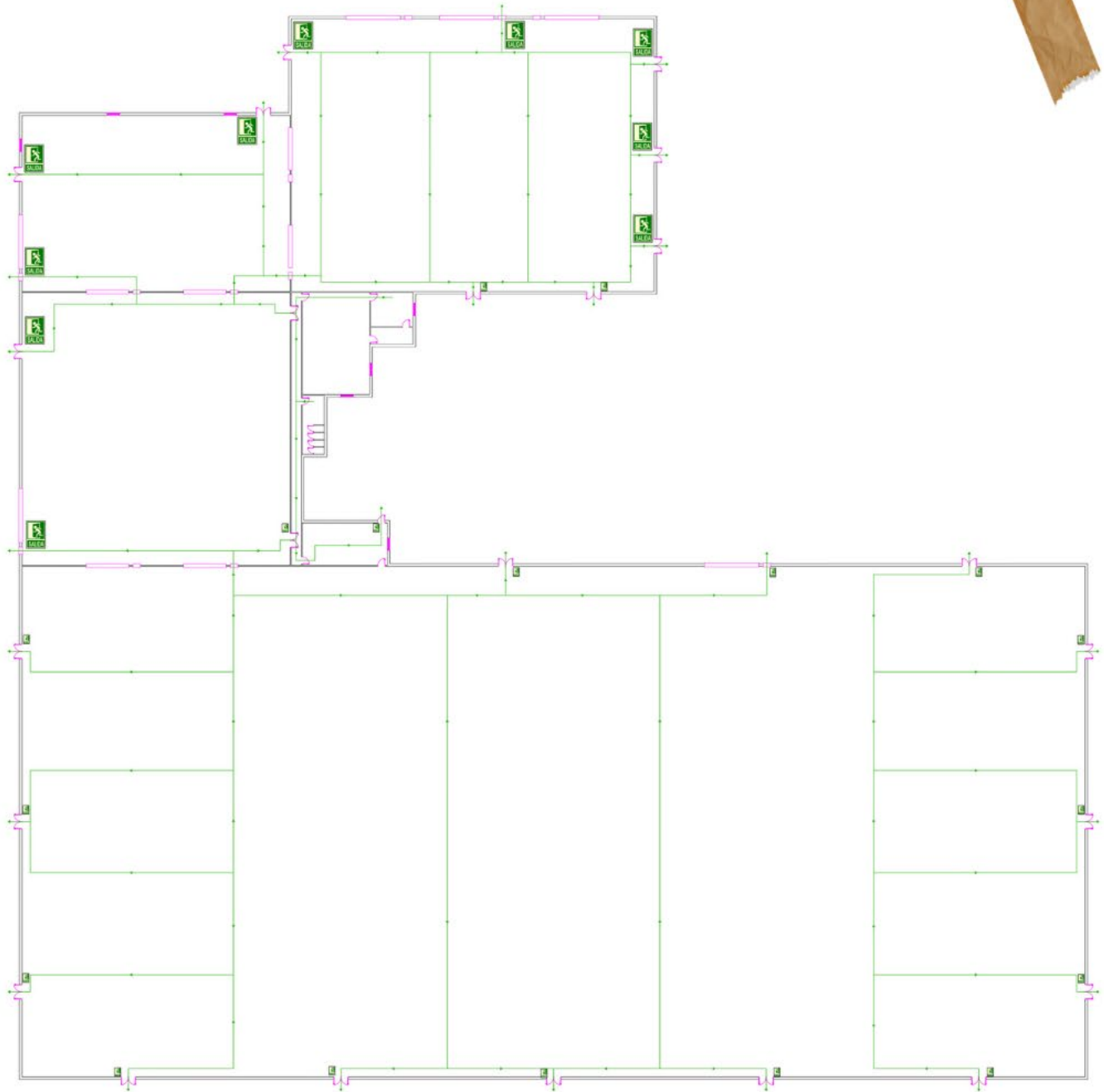
Acheta Rico





PLANO DE EVACUACION



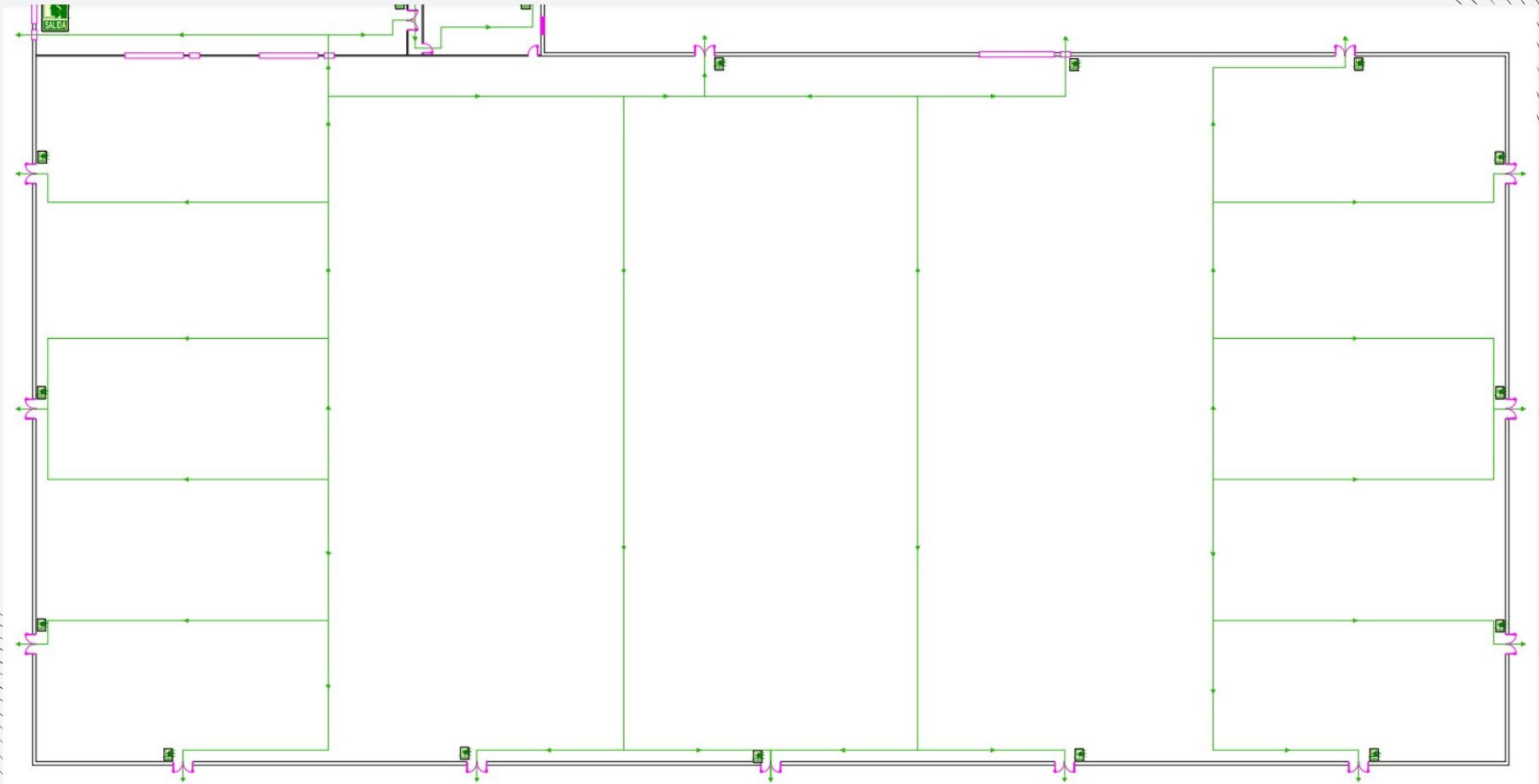


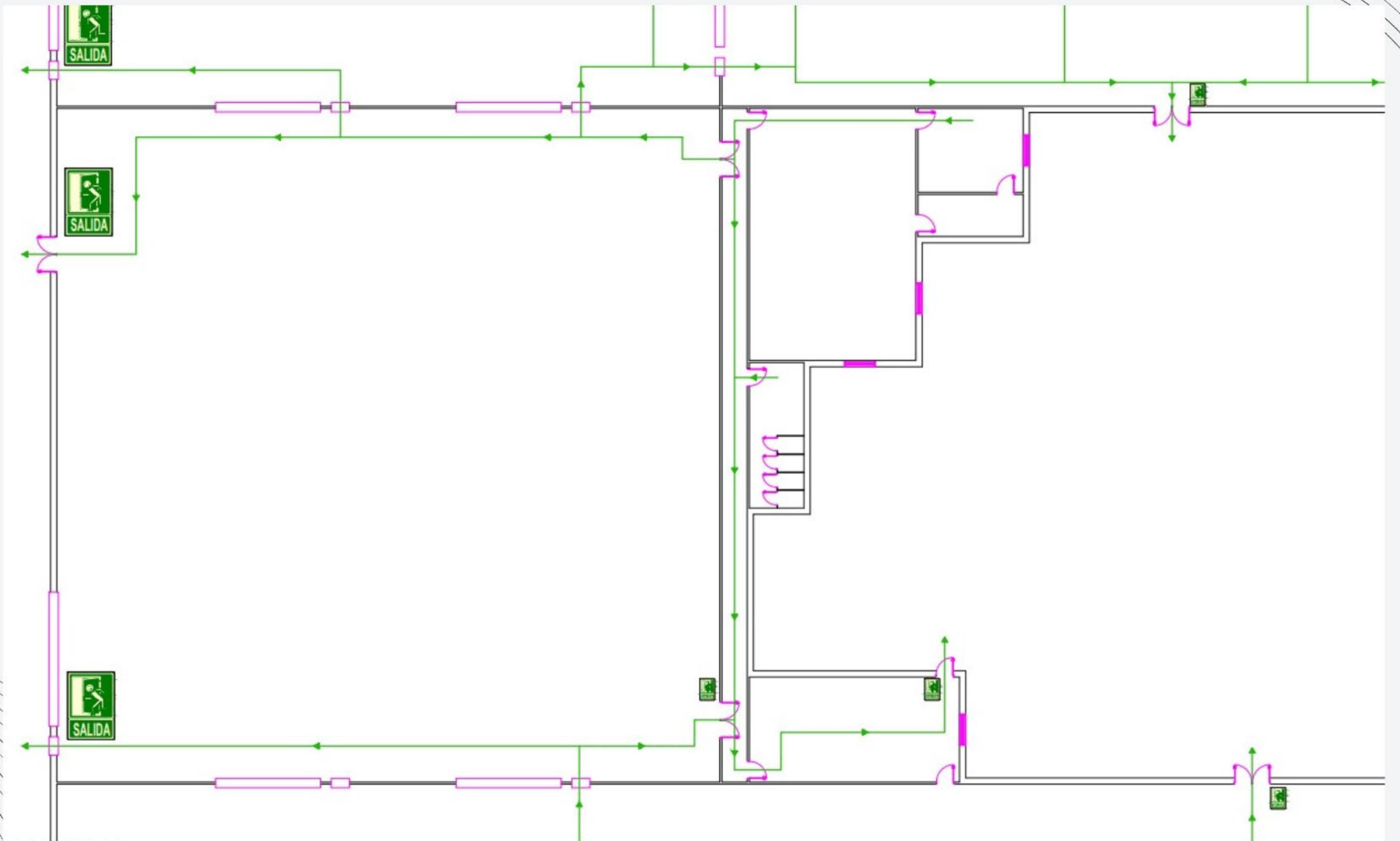
PLANO DE EVACUACION

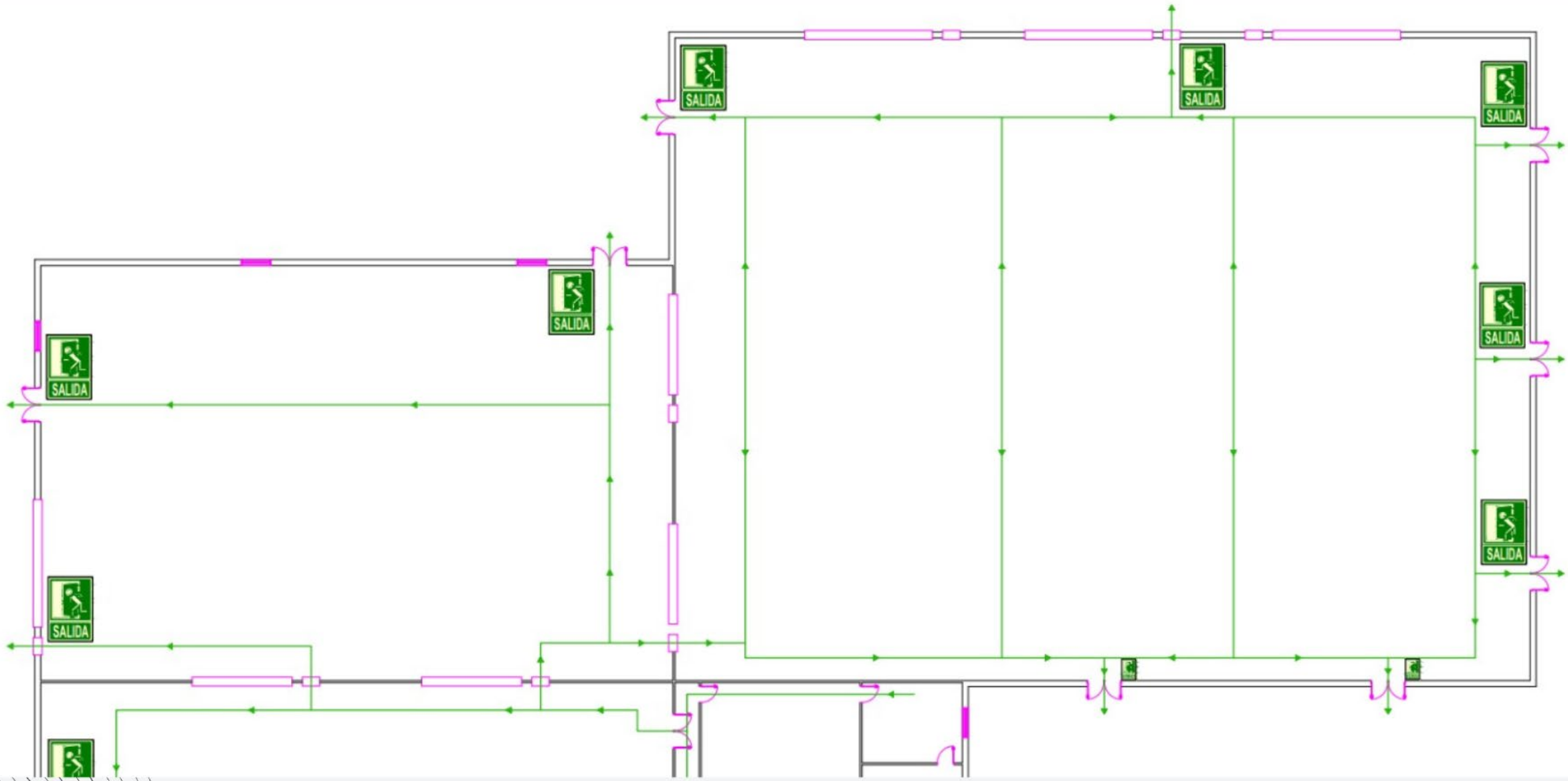


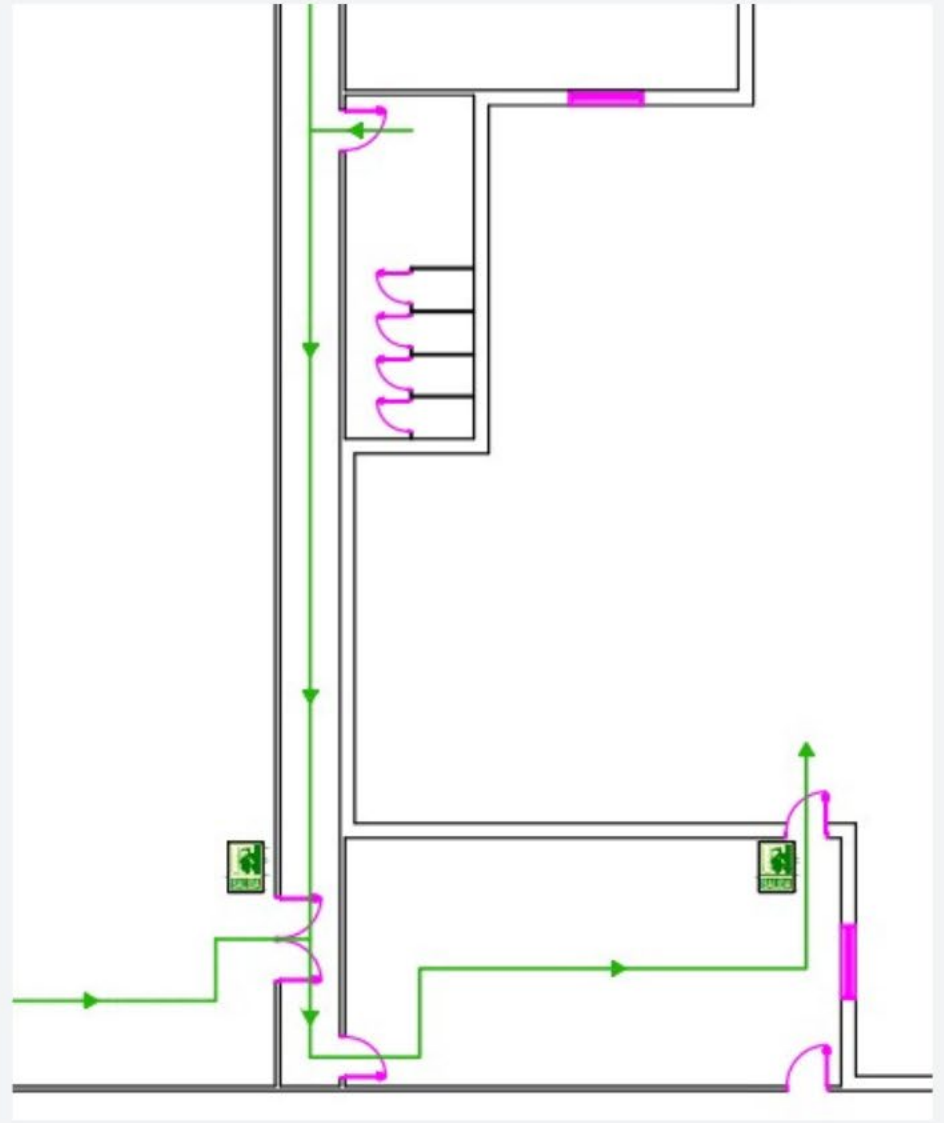
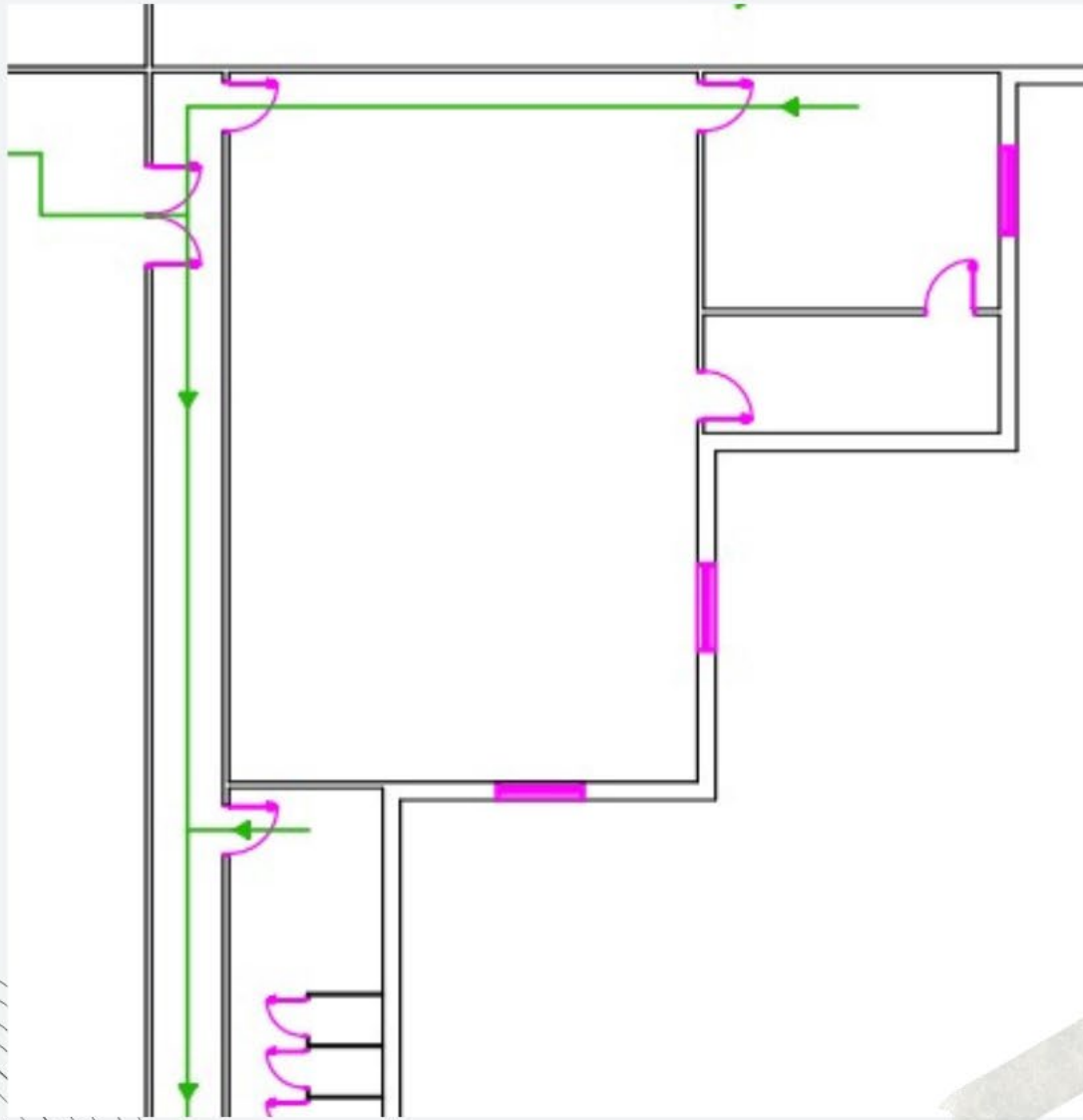
Acheta Rico













PROCESOS



1

ADQUISICIÓN
DE INDIVIDUOS



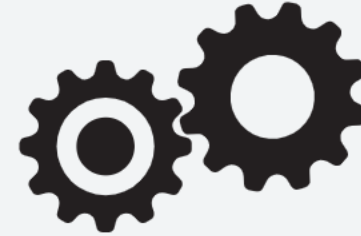
2

RECOGIDA



3

CRECIMIENTO Y
DESARROLLO



4

PRODUCCIÓN DE
HARINA Y
APERITIVOS



5

VENTA

2

RECOGIDA

de huevos y/o adultos



2

RECOGIDA

de huevos y/o adultos



2

RECOGIDA

de huevos y/o adultos



4

PRODUCCIÓN

de harina y aperitivos



4

PRODUCCIÓN

de harina y aperitivos



3 500 kg/mes de grillos

Harina

Aperitivos

4

PRODUCCIÓN

de harina y aperitivos



Liofilización

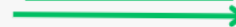


Desinfección



Deshidratación
Tueste

Harina



Molienda



Empaquetado

Aperitivos



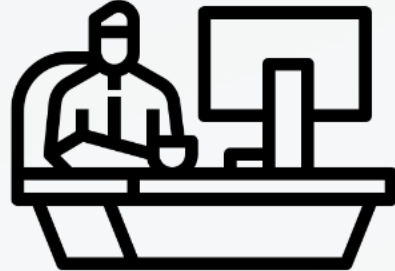
RECURSOS HUMANOS



Biólogos
Químicos



Operarios



Gerente



Limpieza



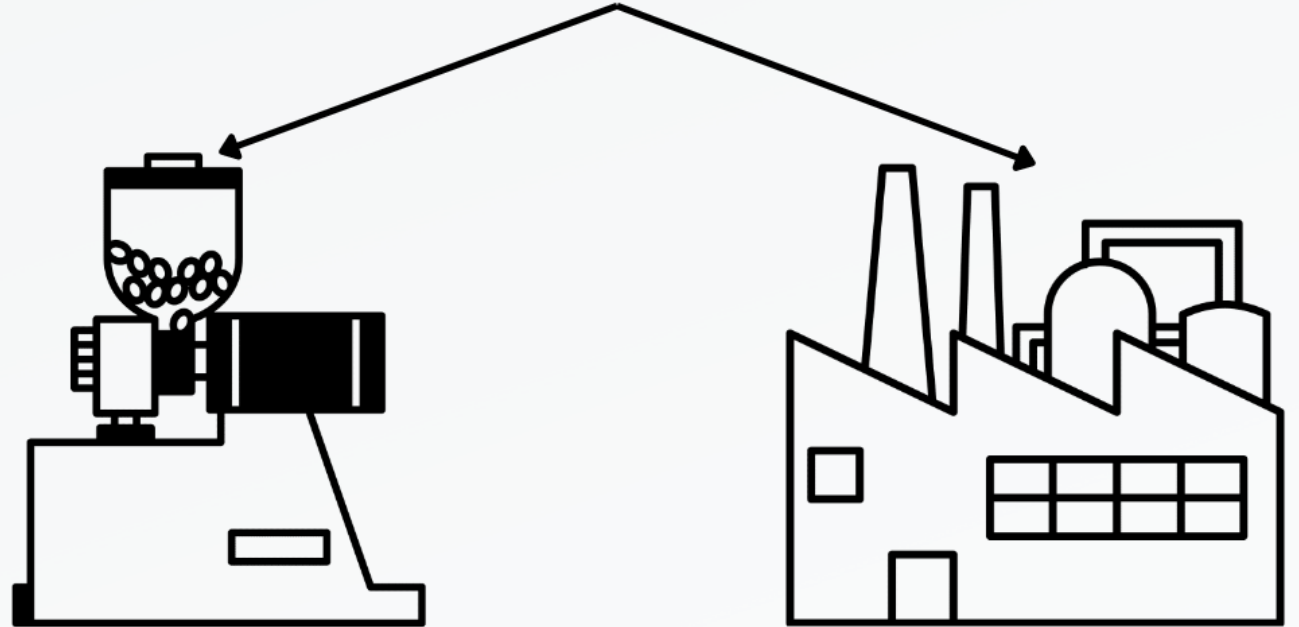
Transportista



PRESUPUESTO



2,5 mill € + IVA





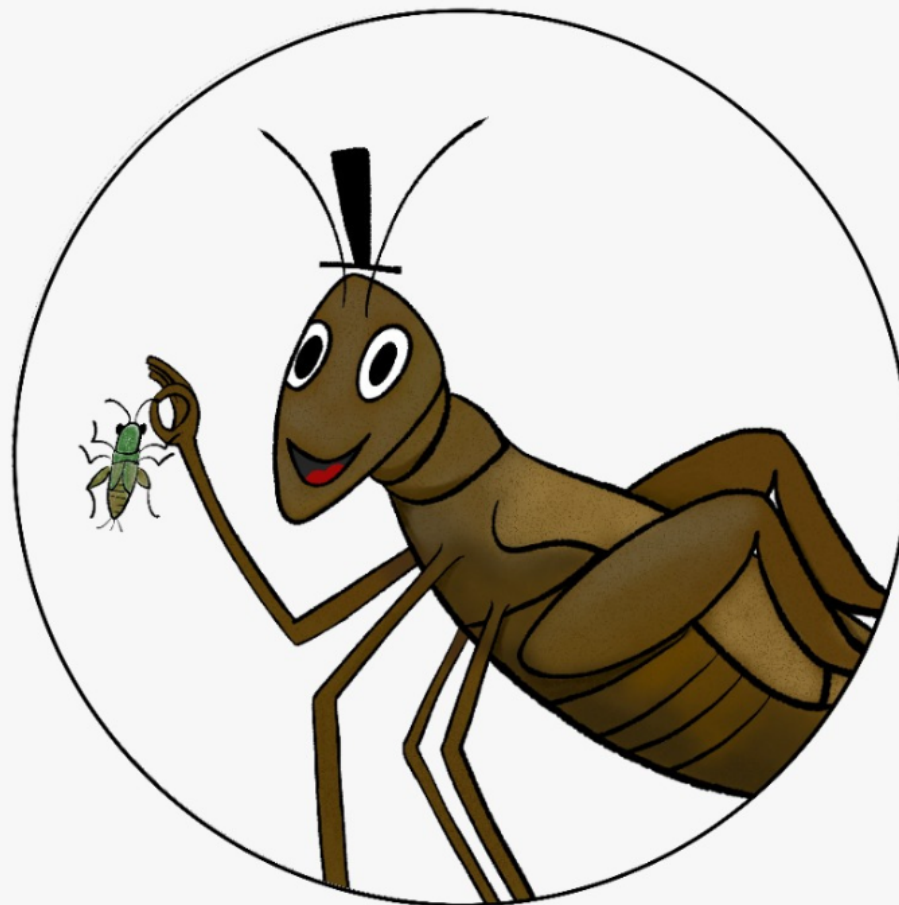
CONCLUSIONES



www.estiliva.com
ESTILIVA

**¡MUCHAS
GRACIAS!**

Universida_{de}Vigo



Acheta Rico